



**FIELDCREST HIGH SCHOOL
COURSE TO CAREER GUIDE
2023-2024**

Welcome to Fieldcrest High School

Tomorrow's Leaders Learning Today

The Fieldcrest community empowers learners to recognize and achieve personal growth for personal success. This course to career guide is designed to help students plan their program of study encompassing a variety of courses offered through Fieldcrest High School. Students should utilize resources such as their parents, counselors, and teachers to help guide their program. Planning a four-year program is essential to a student's post high school career. The goal of this guide is to expose students to potential career Pathways and use that knowledge to guide their course selection.

All courses available for student selection are available in this guide in addition to course length, pre-requisite information, credit earned, course code, and NCAA status (for information about the NCAA program, visit www.ncaa.org). Course offerings are subject to enrollment. External coursework such as BACC, Dual credit, internships, etc. must be approved by the school administration and counselor prior to enrollment. Deadlines for external course enrollment must be observed.

Please note: Because many students will be continuing their education beyond high school in some type of post-secondary program, students should consult university, junior college, or post-secondary training institution catalogs or publications for specific admission requirements.

TABLE OF CONTENTS

GENERAL INFORMATION	4
STUDENT SERVICES	4
COUNSELING OFFICE STAFF	4
COUNSELING OFFICE INFORMATION WEBSITE	4
COURSE SELECTION & REGISTRATION	4
GRADING AND REPORTING	5
Grading Scale and Grade Point Average	5
Semester Summative Assessment	5
CLASSIFICATION OF STUDENTS	6
GENERAL SCHEDULING REGULATIONS	7
Credit for Alternative Courses and Programs	7
Foreign Exchange Programs	7
Dual Enrollment Coursework	7
Foreign Language Courses	8
Tool for College and Career Planning	8
Early Graduation	9
GRADUATION REQUIREMENTS	10
STUDENT RECOGNITION	11
Cum Laude Recognition	11
Honor Roll	11
Seal of Biliteracy/Commendation	11
NCAA ELIGIBILITY GUIDELINES	11
COLLEGE LEVEL COURSEWORK OFFERINGS	12
FIELDCREST CAREER PATHWAYS	13
AGRICULTURE, FOOD, AND NATURAL RESOURCES	14
ARCHITECTURE AND CONSTRUCTION	15
ARTS, AUDIO/VIDEO TECHNOLOGY & COMMUNICATIONS	16
BUSINESS MANAGEMENT & ADMINISTRATION	17
EDUCATION AND TRAINING	18
FINANCE	19
GOVERNMENT AND PUBLIC ADMINISTRATION	20
HEALTH SCIENCES	21
HOSPITALITY AND TOURISM	22
HUMAN SERVICES	23
INFORMATION TECHNOLOGY	24
LAW, PUBLIC SAFETY, CORRECTIONS, & SECURITY	25
MANUFACTURING	25

MARKETING	27
SCIENCE, TECHNOLOGY, ENGINEERING, & MATH	28
TRANSPORTATION, DISTRIBUTION, & LOGISTICS	29
COURSE DESCRIPTIONS	30
ART COURSES	30
BUSINESS AND TECHNOLOGY COURSES	34
EDUCATION COURSES	37
ENGLISH, COMMUNICATION, and MEDIA COURSES	38
FAMILY AND CONSUMER SCIENCE COURSES	46
FOREIGN LANGUAGE COURSES	49
HEALTH, PE, DRIVER'S ED COURSES	50
MATHEMATICS COURSES	52
MUSIC COURSES	57
SCIENCE and AGRICULTURE COURSES	58
AGRICULTURAL SCIENCE COURSES	59
SCIENCE COURSES	62
SOCIAL STUDIES COURSES	65
SPECIAL EDUCATION COURSES	70
VOCATIONAL COURSES	76
BLOOMINGTON AREA CAREER CENTER - OFF CAMPUS COURSES	79

GENERAL INFORMATION

STUDENT SERVICES

Fieldcrest High School has a variety of student supports including administrators, counselors, school psychologist, social-worker, speech and language therapists, school nurse, and special education teachers. In addition to this team, outside agency counselors are an available resource within the context of the school day. All of these individuals work together to ensure the success of students at Fieldcrest High School. Each student is assigned a counselor that is there to support the students with academic, social/emotional, and career needs. Parents are encouraged to connect with their child's school counselor to work together towards their path throughout high school. A college and career counselor is available for students and coordinates activities to help expose students to age appropriate college and career tasks, in addition to specific college and financial aid information.

COUNSELING OFFICE STAFF

Kristin Wilson - Counselor - kwilson@unit6.org

Ashley Swanson - Counselor - aswanson@unit6.org

COUNSELING OFFICE INFORMATION WEBSITE

<http://unit6fhs.ss18.sharpschool.com/guidance>

COURSE SELECTION & REGISTRATION

Beginning in November, administrators, counselors and teachers are preparing students for the selection of courses for the following year. Students, with the help of their parents, are required to select eight courses for the full academic year. Subject level placement is based upon recommendations of middle school staff, high school staff, previous performance, interventions and standardized testing. Students need to be aware of the course selection deadlines made available through the selection process. Course change requests must be completed by the first day of school and be approved through the course change policy located in the Fieldcrest High School Handbook.

GRADING AND REPORTING

Fieldcrest High School is organized on a two-semester basis with students taking four classes each semester. Students will earn a full credit for each course successfully completed in a semester for a total of eight possible credits per year. The parent(s) or guardian(s) have access to student progress via the parent portal on TeacherEase to view as needed. These reports will indicate the current cumulative grade for the student. The final course grade will be assigned at the end of the semester.

Grading Scale and Grade Point Average

Percent Earned	Grade Awarded	Regular GPA Points Assigned	Weighted GPA Points Assigned
100 - 90	A	4	5
89 - 80	B	3	4
79 - 70	C	2	3
69 - 60	D	1	2
59 - 0	F	0	0

A student’s grade point average is computed by including the grades from all courses that a student has taken while in high school. Grading and grade point averages will be reflected on the student’s transcript according to the chart above.

No class rank will be reported on transcripts or for purposes of scholarships and college applications*, students will denote that the school does not rank and only a grade point average will be provided.

*If any organization requires a class rank for acceptance into an institution or scholarship, the registrar or counselor will provide it directly to the organization.

Semester Summative Assessment

All courses will have a concluding assessment (test, paper, presentation, performance, or project) that assesses cumulative skills in the course. The assessment should be a reflection of student learning and assess skills covered in the course. The summative assessment should be department aligned and rigorous in its evaluation.

The assessment can help a student’s overall course grade. However, the student is expected to perform to the same level he/she has performed throughout the semester. Therefore, students not meeting the same level of work on the final may have their grade impacted by the final. If the student is ill on the final assessment day, he or she may be required to have a doctor’s note. A student not completing the final assessment activity will receive a mark of 0 and will fail the course for the semester.

CLASSIFICATION OF STUDENTS

The number of credits earned shall determine classification of students. An entering student with less than 2 completed semesters will be classified as a freshman.

GRADE CLASSIFICATION	SEMESTERS COMPLETED	CREDITS EARNED	STANDARDIZED TESTS GIVEN
FRESHMAN	2	Less than 6	PSAT 8/9 (Spring)
SOPHOMORE	4	Minimum of 6	PSAT 10 (Spring)
JUNIOR	6	Minimum of 13	PSAT (Fall), ASVAB (Winter) SAT (Spring)
SENIOR	8	Minimum of 20	None

Students who transfer to Fieldcrest High School will be classified by the number of credits accepted by the school from which the student is transferring. Acceptance of credits from non-accredited educational institutions must be evaluated by the administration prior to granting credit.

GENERAL SCHEDULING REGULATIONS

Credit for Alternative Courses and Programs

Alternative coursework includes correspondence coursework, online courses through external institutions, and summer school courses. A student enrolled in a correspondence course may receive high school credit for work completed, provided:

- The course is offered through an accredited program approved by the Fieldcrest Board of Education
- The student assumes responsibility for all fees unless otherwise noted

- The course is approved in advance by the high school principal.

A maximum of three units of credit may be counted toward the requirement for a student's high school graduation unless the student has been approved by the administration to take additional coursework.

Foreign Exchange Programs

The Board of Education may grant a certificate of attendance to exchange students. District students will receive academic credit for foreign exchange courses that meet the criteria established in the curriculum and that are approved by the building principal. International study course work not meeting district requirements may be placed in the student's permanent record and recorded as an international study experience.

Dual Enrollment Coursework

A student who successfully completes a college course may receive high school credit, provided:

- The student is a junior or senior.
- The course is not offered in the high school curriculum or the course at Fieldcrest High School will not fit into a graduating seniors' schedule
- The coursework is approved in advance by the high school counselor and the high school principal through a dual enrollment application
- The student assumes responsibility for all fees
- The student submits final transcripts at the end of the semester that they are enrolled in the course
- All dual enrollment coursework grades are calculated in the student's final grade point average.

The maximum number of credits counted toward the requirements for a student's high school graduation will be subject to review through the counseling department and high school principal.

Foreign Language Courses

A student may receive high school credit by studying foreign language in an approved ethnic school program, provided such program meets the minimum standards established by the State Board of Education. The amount of credit will be based on foreign language proficiency achieved. The building principal may require a student seeking foreign language credit to successfully complete a foreign language proficiency examination.

Tool for College and Career Planning



Academically researched and scientifically validated, Xello’s award-winning program puts the student at the center of their planning experience. Students document their journey as they build self-knowledge, explore post-secondary options, create plans, and continually reassess as they take in new knowledge, skills, and experiences. <https://login.xello.world/>

Physical Education Waiver Policy

All students at Fieldcrest High School must be enrolled in PE for every year enrolled in high school (up to 4 years) with the exception of PE waivers as designated by Illinois School Code. All students must enroll in Health and Wellness and do not have the option of waiving PE during that semester.

The provisions to waive physical education include:

1. The student has a medical waiver written by a doctor.
2. During a student’s Junior and/or Senior year, the waiver applies to an interscholastic sport or activity sanctioned by the Illinois High School Association (IHSA) and approved by the Board of Education in which athletic teams participate in a minimum of six (6) athletic contests.
3. A student may waive PE in order to be able to take a course or courses which are specifically required for admission to college.
4. A student lacking sufficient course credit for one or more required courses may waive PE to take courses to fulfill graduation requirements.
5. Sophomore through senior students in the marching band can request a PE waiver. Students must enroll in the full year of band to be eligible for a waiver.
6. If a student is enrolled at BACC, and needs to take specific courses to meet local graduation requirements, a waiver can be issued. The student must have passed all previously taken PE courses.

Students apply for a PE Waiver through the Counseling Office. Each request will be verified, and eligibility will be determined on a case-by-case basis. If a student on athletic waiver is cut, quits an athletic team, or is dismissed by the coach, that student may lose his/her physical education waiver and may be placed into a physical education class if the credit is necessary for graduation.

LEGAL REF: 105 ILCS 512-3.44, 512-3.108, 512-3.115, 5110-22.43x, 5127-6, 5127-22.3, and 5127-22.05.23 Ill.Admin.Code §§ 1.420(p), 1.440(j), and 4.450(c).

Early Graduation

Students are encouraged to attend high school for eight semesters in order for them to access the educational opportunities available to them. Attending high school all four years allows students to grow mentally, socially, physically and emotionally prior to entering the world of work or beginning post-secondary educational opportunities.

Only a small minority of high school students are able to graduate early, reaching their peak in the above stated categories. The option to apply for early graduation must be given careful consideration by students and parents.

Therefore, as a general policy, a student will not be granted early graduation except under the following circumstances:

1. A student may apply for early graduation if he/she has completed, or is in the process of completing all graduation requirements as stated in Board Policy 6.300.
2. Applications for early graduation must be submitted to the counseling office. Applications are due to the Counseling Office by June 1st of the requested graduation year. The academic record of each applicant will be reviewed as part of the approval process.
3. The student's purpose for requesting early graduation must be clearly stated. Each request for early graduation will be reviewed and acted upon in conjunction with the reasons provided by the applicant.
4. Students may not apply correspondence credits toward meeting graduation requirements when applying for early graduation.
5. Required coursework and/or credits in the student's schedule during the final semester must be completed in order for early graduation to occur. Early graduates will be required to take semester summative assessments/semester exams.
6. Students who graduated early are not eligible to participate in winter or spring extracurricular activities except for Prom and the Graduation Ceremony. Early graduates may attend functions as a guest, when accompanied by a student currently enrolled at Fieldcrest High School and may participate in the graduation ceremony.

GRADUATION REQUIREMENTS

The school year is divided into two semesters of 18 weeks each. Classes are 85 minutes per day, 5 days/week for one semester. Generally, one credit is earned for each successfully completed course.

Academic Areas	District Requirements (Beginning with Class of 2027)	District Requirements (Class of 2026)	District Requirements (Class of 2025)	District Requirements (Class of 2024)	4-year College or Community College Programs	Highly Selective Colleges and Universities
ENGLISH	4	4	4	4	4	4
MATH	4 (1 credit in Algebra; 1 credit in Geometry)	4 (1 credit in Algebra; 1 credit in Geometry)	3 (1 credit in Algebra; 1 credit in Geometry)	3 (1 credit in Algebra; 1 credit in Geometry)	4 (Recommended through Alg. 2)	4 (Recommended through Calc)
SCIENCE	3 (2 credits must be in a Lab Science)	3 (2 credits must be in a Lab Science)	3 (2 credits must be in a Lab Science)	2	3	4
SOCIAL STUDIES	3 (1 credit must be US History; 1 credit must be Gov/Civics)	3 (1 credit must be US History; 1 credit must be Gov/Civics)	3 (1 credit must be US History; .5 credit must be Gov/Civics)	2 (1 credit must be US History; .5 credit must be Gov/Civics)	3	3-4
CONSUMER EDUCATION/ FINANCIAL LITERACY	1	1	1	.5	1	1
PHYSICAL EDUCATION	3	3	3	3.5	2	2
HEALTH & WELLNESS	1	1	1	.5 (Health)	1	1
DRIVER'S EDUCATION	.5 (may be exchanged with an elective if course taken elsewhere)					
CAREER & COMPUTER LITERACY	.5					
FOREIGN LANGUAGE/ VOCATIONAL/ ART/MUSIC				1		
FOREIGN LANGUAGE	2	2	1		2 (Recommended 2-4 years of same Foreign Language)	4 (Recommended 2-4 years of same Foreign Language)
VOCATIONAL/FINE ART/ FORENSIC SPEECH/ 3RD YR OF FOREIGN LANG.	1	1	1		1	1
ELECTIVES	5	6	6	7.5		
TOTAL CREDITS AT GRADUATION	28	28	26	24	32	32

Additional State Requirements:
 Completion of SAT Test (11th Grade)
 Completion of FAFSA (12th Grade)
 Pass Federal and State Constitution Tests & Flag Test (in Gov/Civics course)

STUDENT RECOGNITION

Cum Laude Recognition

Students can earn the following recognitions at graduation using their final cumulative GPA over 8 semesters.

Summa Cum Laude - 4.0 and above

Magna Cum Laude - 3.85 - 3.99

Cum Laude - 3.75 - 3.84

Honor Roll

Students attaining a grade point average of 3.20 to 3.74 will be on the "honor" roll. A grade point average of 3.75 and above enables a student to be on the "high honors" roll. Honor roll is determined from the last completed semester.

Seal of Biliteracy/Commendation

Students applying for the Illinois State Seal of Biliteracy or Commendation must demonstrate proficiency in English and an additional language.

Demonstrated proficiency in English is determined by a student's SAT score in Evidence Based Reading and Writing (a score of 540 or higher). Demonstrated proficiency in an additional language is demonstrated by a 3 or higher on the AP Language and Culture exam for the second language. An AP Language and Culture exam score of 3 will qualify students for Commendation, whereas a score of 4 or 5 will qualify a student for the Seal of Biliteracy.

NCAA ELIGIBILITY GUIDELINES

Students interested in participating in college level athletics are highly encouraged to verify the guidelines set forth by college level athletic organizations such as NJCAA, NAIA, and NCAA. High school course requirements are not aligned exactly with college academic requirements, and it is the responsibility of the student and their parents/guardians to verify a student's high school courses meet the correct requirements to participate in collegiate athletics. For more information regarding eligibility guidelines, please see your counselor or visit the following sites:

<https://www.playnaia.org/>

<http://www.ncaa.org/student-athletes/future>

ACCELERATED PLACEMENT POLICY

Students who meet or exceed state standards in ELA, math, or science will be eligible to participate in accelerated placement programs. Students who are identified by standardized testing will be automatically enrolled, in the following school term, into the next most rigorous level of coursework. Identified students may choose to enroll in alternative coursework if it better aligns with the student's postsecondary education or career goals than the accelerated options. Additional information related to accelerated placement will be available on the school website by June 30, 2023

COLLEGE LEVEL COURSEWORK OFFERINGS

DEPARTMENT	DUAL CREDIT	ADVANCED PLACEMENT
ART	ART 110: Introduction to Art	
BUSINESS	BUS 110: Introduction to Business <i>(online only)</i>	
EDUCATION	EDUC 111: Introduction to Education	
ENGLISH	COMM 110: Introduction to Communication: LIT 215: American Literature to 1865 LIT 216: American Literature Since 1865 ENG 110: Composition ENG 111: Composition II	
MATH	MATH 110: Concepts of Math MATH 111: General Education Statistics	AP Calculus AB
MUSIC AND PERFORMING ARTS	MUS 148: Intro to American Music	
NURSING	HLTH 121: Medical Terminology	
PHYSICAL EDUCATION	PHYED 149: Weight Training PHYED 162: Advanced Weight Training	
SOCIAL STUDIES	HIST 201: American History to 1877 HIST 202: American History Since 1877	

FIELDCREST CAREER PATHWAYS

Fieldcrest High School follows the nationally recognized career exploration model to assist students in the decision making process towards post-secondary planning. The following terms will be utilized throughout this course-to-career guide:

Career Cluster: groups of occupations and industries that have a set of foundational knowledge and skills in common. There are 16 nationally recognized clusters within which are multiple career Pathways.

Career Pathway: There are 79 multi-year programs of academic and technical study that prepare high school students for a full range of postsecondary options within each of the 16 clusters. These pathways provide a context for exploring career options at all levels of education and a framework for linking learning to the knowledge and skills needed for future education and employment. Each pathway will provide a guide for students to make course selections beyond the core curriculum outlined below.

CORE CURRICULUM

TRADITIONAL CORE COURSE TRACK

	ENGLISH	MATH	SCIENCE	SOCIAL STUDIES
YEAR 1	ENGLISH 1	ALGEBRA 1/ ALG APPLICATIONS	BIOLOGY OR INTRO TO BIOLOGY	WESTERN CIV OR WORLD CULTURES
YEAR 2	ENGLISH 2	GEOMETRY	INTRO CHEM/PHYSICS	US HISTORY
YEAR 3	ENGLISH 3	ALGEBRA II	3RD CREDIT OPTION	GOVERNMENT
YEAR 4	ENG ELECTIVE	MATH ELECTIVE	SCI ELECTIVE	SS ELECTIVE

ADVANCED CORE COURSE TRACK

	ENGLISH	MATH	SCIENCE	SOCIAL STUDIES
YEAR 1	ENGLISH 1	ALGEBRA APPLICATIONS/ GEOMETRY	BIOLOGY INTRO CHEM/PHYSICS	WESTERN CIV GOVERNMENT
YEAR 2	ENGLISH 2	ALGEBRA II	BIO II, CHEM, AG SCI	ICC US HISTORY
YEAR 3	AMERICAN LIT	TRIG/PRECALC	ADVANCED ELECTIVE	SS ELECTIVE
YEAR 4	COMPOSITION	AP CALCULUS/DUAL CREDIT OPTIONS		

NOTE: These course tracks are a guide for students as a sample of how the core course requirements fit into the four year plan. We encourage all students to complete a four year plan individualized to their needs.

AGRICULTURE, FOOD, AND NATURAL RESOURCES

The production, processing, marketing, distribution, financing, and development of agricultural commodities and resources including food, fuel, fiber, wood products, natural resources, horticulture, and other plant and animal.

Related Careers*: Agriculture Technician, Animal Breeder, Animal Scientist, Biochemist, Farm Buyer and Purchaser Agent, Conservation Science, Environmental Scientist, Farm Technician, Fish and Game Warden, Food Scientist, Forester, Landscaping Manager, Greenhouse Management, Occupational Health and Safety Specialist, Pesticide Worker, Park Management, Refrigeration Technician, Service Unit Operator, Soil and Plant Science, Water Treatment Plant Operator, Zoologist and Wildlife Biologist

Related College Majors*: Agribusiness, Agriculture, Agronomy, Animal Sciences, Crop Production, Environmental Sciences, Fishery, Food Science, Forestry, Landscaping, Plant Sciences, Water and Wastewater Management, Wildlife Sciences

**Find more related careers and college majors through your Xello Account*

Pathways: Agribusiness Systems, Animal Systems, Environmental Service Systems, Food Products & Processing Systems, Natural Resources Systems, Plant Systems, Power, Structural & Technical Systems

SAMPLE Pathway: Agribusiness Systems

Pathway Courses

Year 1-2	Intro to Agriculture Agriculture Science
Year 3-4	Agriculture Business Management Agribusiness Workplace Experience

Related Electives

Business and Technology Concepts Accounting 1 Chemistry Principles of Economics BSAA Science Classes
--

Recommended Early College Credit Options

MATH 111 - General Education Statistics COMM 110 - Introduction to Communication: Presentation and Theory BUS 110 - Introduction to Business
--

Career Related Activities

Athletics FFA Key/Interact Club Student Council
--

ARCHITECTURE AND CONSTRUCTION

Designing, planning, managing, building and maintaining the built environment.

Related Careers*: Architectural Technology/Technician, Architecture (BArch, BA/BS, MArch, MA/MS, PhD). Building/Construction Finishing, Management, & Inspection, Building/Property Maintenance and Management, Carpentry/Carpenter, Civil Drafting and Civil Engineering CAD/CADD, Civil Engineering Technology/Technician, Construction/Heavy Equipment/Earthmoving Equipment Operation, Drafting and Design Technology/Technician, Drywall Installation/Drywall, Electrical & Power Transmission Installation/Installer, Electrician, Heating, Air Conditioning & Refrigeration Technology/Technician, Interior Architecture, Ironworking/Ironworker, Landscape Architecture (BS, BSLA, BLA, MSLA, MLA, PhD), Lineworker, Mason/Masonry, Pipefitting/Pipefitter and Sprinkler Fitter, Plumbing Technology/Plumber, Roofer, Security System Installation, Repair, & Inspection Technology/Technician, Solar Energy Technology/Technician

Related College Majors*: Architecture, Carpentry, Civil Engineering, Construction Trades, Electrician, Energy Management, Environmental Design, Metal Building and Assembly, Plumbing, Security System Installation

**Find more related careers and college majors through your Xello Account*

Pathways: Design/Pre-Construction, Construction, Maintenance/Operations

SAMPLE Pathway: Construction

Pathway Courses

Year 1-2	Introduction to Manufacturing and Technology Ag Mech and Construction Construction Trades I
Year 3-4	Construction Trades II General Construction Workplace Experience

Related Electives

Art I Business & Technology Concepts English IV Interior Design: Residential and Commercial Spaces Spanish I BACC: Construction
--

Recommended Early College Credit Options

MATH 111 - General Education Statistics COMM 110 - Introduction to Communication: Presentation and Theory BUS 110 - Introduction to Business
--

Career Related Activities

Athletics Key/Interact Club Be the Change

ARTS, AUDIO/VIDEO TECHNOLOGY & COMMUNICATIONS

Designing, producing, exhibiting, performing, writing and publishing multimedia content including visual and performing arts and design, journalism and entertainment services.

Related Careers*: Archivists, Art Directors, Art/Drama/Music Teachers, Audio/Video Equipment Technicians, Broadcast News Analysts, Choreographers, Computer Programmers, Curators, Editors, Fashion Designers, Graphic Designers, Journalism, Locomotive Engineers, Historians, Music Directors, Photographers, Prepress Technicians, Public Relations Specialists, Radio Operators, Set and Exhibit Designers, Talent Directors, Technical Directors/Managers, Telecommunications Equipment Installers, Writers/Authors

Related College Majors*: Broadcast Journalism, Cinematography and Film Production, Commercial Photography, Computer Graphics, Craft Design, Fashion Design, Film Studies, Fine Arts, Industrial Design, Interior Design, Journalism, Mass Communication/Media Studies, Music History, Music Performance, Music Education, Painting, Photography, Photojournalism, Printmaking, Radio/Television Broadcasting, Technical Theatre, Theatre Literature, Visual and Performing Arts, Voice and Opera

**Find more related careers and college majors through your Xello Account*

Pathways: A/V Technology & Film, Printing Technology, Visual Arts, Performing Arts, Journalism & Broadcasting, Telecommunications

SAMPLE Pathway: Journalism & Broadcasting

Pathway Courses

Year 1-2	Media I Media II
Year 3-4	Journalism Broadcast Technology Workplace Experience OR Arts, Audio/Video, Technology, & Communications Workplace Experience

Related Electives

Publication Production	Creative Writing
Introduction to Public Presentation	Spanish I
Sociology	Theatre
Advanced Theatre Production	BACC: Graphic Design and Video

Recommended Early College Credit Options

MATH 110 - Concepts of Math
MATH 111 - General Education Statistics
COMM 110 - Introduction to Communication: Presentation and Theory
ENG 110 - Composition
ENG 111 - Composition 2

Career Related Activities

Athletics	Media
Yearbook	Speech
Drama Tech Crew	

BUSINESS MANAGEMENT & ADMINISTRATION

Designing, planning, managing, building and maintaining the built environment.

Related Careers*: Accountants, Administrative Services Managers, Advertising Sales Agents, Auditors, Bookkeeping Clerks, Chief Executives, Communications Teachers, Computer Information System Managers, Computer Programmers, Construction Managers, Court Clerks, Credit Analysts, Economists, Financial Analysts, HUMAN Resources Specialists, Insurance Claims Clerks, Management Analysts, Postal Service Clerks, Statisticians, Survey Researchers, Tax Preparers, Treasurers

Related College Majors*: Accounting, Business Administration, Customer Service Management, Entrepreneurial Studies, Human Resources Management, Labor Studies, Management Science, Operations Management and Supervision, Small Business Administration

**Find more related careers and college majors through your Xello Account*

Pathways: General Management, Business Information Management, Human Resources Management, Operations Management, Administrative Support

SAMPLE Pathway: General Management

Pathway Courses

Year 1-2	Business and Technology Concepts
Year 3-4	Principles of Economics Business Management Workplace Experience

Related Electives

Accounting I	Introduction to Public Presentation
Principles of Marketing	Psychology
Spanish	Women's Activism
Sociology	

Recommended Early College Credit Options

MATH 110 - Concepts of Math
MATH 111 - General Education Statistics
COMM 110 - Introduction to Communication: Presentation and Theory
BUS 110 - Introduction to Business
ENG 110 - Composition
ENG 111 - Composition 2

Career Related Activities

Athletics	Speech
Scholastic Bowl	Key/Interact Club
National Honor Society	Student Council

EDUCATION AND TRAINING

Planning, managing and providing education and training services and related learning support services.

Related Careers*: Agriculture Science Teachers, Career and Technical Education Teachers, Dietitian and Nutritionists, Education Administration, Elementary School Teachers, School Counselors, English Teachers, Engineering Teachers, Geography Teachers, Historians, Judges, Kindergarten Teachers, Librarians, Middle School Teachers, Postsecondary Teachers, Preschool Teachers, Recreation Workers, Secondary School Teachers, Special Education Teachers, Teacher Assistants

Related College Majors*: Administration of Special Education, Adult and Continuing Education, Any Subject Teacher Education, Early Childhood Education, Education (general), Elementary Education, Housing and Human Environments, Library Assistant, Library Science, Special Education, Urban Education and Leadership

**Find more related careers and college majors through your Xello Account*

Pathways: Administration & Administrative Support, Professional Support Services, Teaching/Training Pathway

SAMPLE Pathway: Teaching/Training

Pathway Courses

Year 1-2	Parenting Child Growth and Development
Year 3-4	EDU 111 - Introduction To American Education Early Childhood Education Workplace Experience

Related Electives

Psychology	Sociology
Introduction to Public Presentation	
Voices of Contemporary Thought	Spanish
Contemporary American Issues	Women's Activism
Coursework related to specialization field of interest	

Recommended Early College Credit Options

MATH 110 - Concepts of Math
MATH 111 - General Education Statistics
COMM 110 - Introduction to Communication: Presentation and Theory
ENG 110 - Composition
ENG 111 - Composition 2
HIST 201 - US History to 1877
HIST 202 - US History Since 1877
PSY 110 - Introduction to Psychology

Career Related Activities

Athletics	Key/Interact Club	National Honor Society	Student Council
Be the Change	Scholastic Bowl	Educators Rising	Tutoring

FINANCE

Planning, services for financial and investment planning, banking, insurance and business financial management.

Related Careers*: Actuaries, Bill and Account Collectors, Budget Analysts, Business Teachers, Claims Adjusters, Credit Counselors, Financial Analysts, Insurance Agents, Loan Officers, New Account Clerks, Personal Finance Advisors, Sales Agents, Sales Representatives, Tellers, Treasurers

Related College Majors*: Actuary Science, Banking and Financial Support Services, Credit Management, Finance and Financial Management, Insurance, International Finance, Investments and Securities, Public Finance

**Find more related careers and college majors through your Xello Account*

Pathways: Securities & Investments, Business Finance, Accounting, Insurance, Banking Services Pathway

SAMPLE Pathway: Accounting

Pathway Courses

Year 1-2	Computer Literacy Business and Technology Concepts
Year 3-4	Accounting I Accounting Workplace Experience

Related Electives

Principles of Marketing
Principles of Economics
Introduction to Public Presentation
Spanish I - IV
Psychology
Sociology
Women's Activism

Recommended Early College Credit Options

MATH 110 - Concepts of Math
MATH 111 - General Education Statistics
COMS 110 - Communication: Process and Practice
BUS 110 - Introduction to Business
ENG 110 - Composition
ENG 111 - Composition 2

Career Related Activities

Athletics
Speech
Scholastic Bowl
Key/Interact Club
National Honor Society
Student Council

GOVERNMENT AND PUBLIC ADMINISTRATION

Planning and performing government functions at the local, state and federal levels, including governance, national security, foreign service, planning, revenue and taxation and regulations.

Related Careers*: Accountants, Auditors, Architectural and Engineering Managers, Broadcast News Analysts, Chief Executives, Emergency Management Directors, Financial Examiners, Legislators, Mapping Technicians, Political Science Teachers, Political Scientists, Public Relations Specialists, Reporters, Social and Community Service Managers, Tax Examiners and Collectors, Tax Preparers, Transportation Managers, Urban and Regional Planners

Related College Majors*: American Government and Politics, City and Urban Regional Planning, Non-Profit Management, Political Science, Public Administration, Public Policy Analysis, Taxation

**Find more related careers and college majors through your Xello Account*

Pathways: Governance, National Security, Foreign Service, Planning, Revenue & Taxation, Regulation Pathway, Public Management & Administration

SAMPLE Pathway: Governance

Pathway Courses

Year 1-2	History of Western Civilization Government & Civics World Geography
Year 3-4	Contemporary American Issues Women's Activism Government Service Workplace Experience

Related Electives

Voices of Contemporary Thought Introduction to Public Presentation Spanish Psychology Sociology BACC: Criminal Justice

Recommended Early College Credit Options

MATH 110 - Concepts of Math MATH 111 - General Education Statistics COMM 110 - Introduction to Communication: Presentation and Theory ENG 110 - Composition ENG 111 - Composition 2 HIST 201 - US History to 1877 HIST 202 - US History Since 1877 SOC 110: Introduction to Sociology
--

Career Related Activities

Athletics Scholastic Bowl	Speech Key/Interact Club	National Honor Society Student Council
------------------------------	-----------------------------	---

HEALTH SCIENCES

Planning, managing and providing therapeutic services, diagnostic services, health informatics, support services and biotechnology research and development.

Related Careers*: Administrative Services Managers, Ambulance Drivers, Athletic Trainers, Biological Scientists, Cardiovascular Technologists, Chiropractors, Claims Adjusters, Clinical Psychologists & Counselors, Computer Programmers, Dental Hygienist, Dentists, Dietetic Technicians, Emergency Medical Technicians, Engineers, General Practitioners, Health Educators, Industrial Psychologists, Massage Therapists, Medical Assistants, Mental Health Counselors, Nuclear Medicine Technologists, Nursing Assistants, Nurses, Therapists, Oral Surgeons, Orthodontists, Pharmacists, Physical Therapists, Physicians, Psychiatrists, Radiologic Technicians, Software Developers, Veterinarians

Related College Majors*: Advanced General Dentistry, Aerospace Medicine, Anesthesiologist, Aromatherapy, Therapy, Athletic Training, Auditory and Speech Therapy, Biotechnology, Chiropractic (DC), Clinical Drug Development, Pharmacy, Social Work, Cytogenetics, Dental Assistants, Dental Hygiene, Emergency Care Attendant, Health Communication, Home Health Aide, Kinesiology, Massage Therapy, Medical Insurance Specialist, Medical Office Assistant, Medicine, Optometry, Oral Pathology, Podiatry Psychology, Speech and Language Pathology, Veterinary Sciences, Zoological Medicine

**Find more related careers and college majors through your Xello Account*

Pathways: Therapeutic Services, Diagnostic Services, Health Informatics, Support Services, Biotechnology Research & Development

SAMPLE Pathway: Therapeutic Services

Pathway Courses

Year 1-2	Biology Parenting	Nutrition and Culinary Arts Child Growth & Development
Year 3-4	HEALTH 121 - Medical Terminology Workplace Experience aligned with specialized health field BACC: CNA	

Related Electives

Trigonometry	Pre-Calculus	Calculus	Biology II
Anatomy & Physiology	Chemistry	Psychology	Sociology
BACC: EMT, Health Careers, or Nursing			

Recommended Early College Credit Options

MATH 110 - Concepts of Math	MATH 111 - General Education Statistics
ENG 110 - Composition	ENG 111 - Composition 2
HIST 201 - US History to 1877	HIST 202 - US History Since 1877
COMM 110 - Introduction to Communication: Presentation and Theory	

Career Related Activities

Athletics	Scholastic Bowl	Key/Interact Club	Be the Change	National Honor Society
-----------	-----------------	-------------------	---------------	------------------------

HOSPITALITY AND TOURISM

Management, marketing and operations of restaurants and other food services, lodging, attractions, recreation events and travel related services.

Related Careers*: Bakers, Butchers, Chefs, Fast Food Management, Cooks (All), Cafeteria Chef, Dining Room Attendant, Food Preparers, Food Service Managers, Gaming Managers, Hosts, Lodging Managers, Clerks, Residential Advisors, Meat Packers, Tour Guides, Travel Agents, Waiters and Waitresses

Related College Majors*: Baking and Pastry, Bartending, Culinary Arts, Food Preparation Management, Hospitality Administration and Management, Meat Cutting, Personal and Culinary Services, Resort Management, Restaurant and Food Service Management, Tourism, Tourism Promotions Operations

**Find more related careers and college majors through your Xello Account*

Pathways: Restaurants & Food/Beverage Services, Lodging, Travel & Tourism, Recreation, Amusements & Attractions Pathway

SAMPLE Pathway: Restaurants & Food/Beverage Services

Pathway Courses

Year 1-2	Nutrition and Culinary Arts I Nutrition and Culinary Arts II
Year 3-4	Principles of Marketing BACC: Culinary Arts Restaurant, Food and Beverage Services Workplace Experience

Related Electives

World Cultures Chemistry I Chemistry II Spanish English IV Theatre

Recommended Early College Credit Options

MATH 110 - Concepts of Math COMS 110 - Communication: Process and Practice ENG 110 - Composition ENG 111 - Composition 2 MUS 148 - Introduction to American Music

Career Related Activities

Athletics Key/Interact Club Be the Change National Honor Society Drama
--

HUMAN SERVICES

Preparing individuals for employment in career Pathways that relate to families and human needs such as counseling and mental health services, family and community services, personal care and consumer services.

Related Careers*: Barbers, Chief Executives, Child Social Workers, Childcare Workers, Clergy, City and Regional Planning, Counselors, Editors, Embalmers, Emergency Management Directors, Epidemiologists, Fashion Designers, Funeral Service Managers, Hairdressers, Healthcare Workers, Legislators, Makeup Artists, Marriage and Family Therapists, Mental Health Counselors, Music Directors, Physicians and Surgeons, Political Scientists, Preschool Teachers, Probation Officers, Recreation Workers, Sales Managers, Skin Care Specialists, Social Science Researchers, Substance Abuse and Behavioral Disorder Counselors

Related College Majors*: Barber, Bible Studies, Child Care Provider, Community Health Services, Consumer Economics, Cosmetology, Divinity/Ministry, Ethics, Facial Treatment Specialists, Hair Styling, Human Development, Make-up artist, Mental Health Counselor, Missionary Studies, Pastoral Counseling, Permanent Cosmetics and Tattooing, Philosophy, Pre-Theology, Psychotherapy, Religious Studies, Salon Management, Social Sciences, Theology, Youth Ministry

**Find more related careers and college majors through your Xello Account*

Pathways: Early Childhood Development & Services, Counseling & Mental Health Services, Family & Community Services, Personal Care Services, Consumer Services

SAMPLE Pathway: Personal Care Services

Pathway Courses

Year 1-2	Introduction to Art Painting Textiles and Design
Year 3-4	Sculpture BACC: Cosmetology or Barbering

Related Electives

World Cultures Chemistry I Chemistry II Spanish English IV Principles of Marketing

Recommended Early College Credit Options

Work towards Barbering or Cosmetology Certifications
--

Career Related Activities

Athletics	Key/Interact Club
Be the Change	Drama
Media	

INFORMATION TECHNOLOGY

Building linkages in IT occupations for entry level, technical and professional careers related to the design, development, support and management of hardware, software, multimedia and systems integration services.

Related Careers*: Architectural and Engineering Managers, Computer Information Scientists, Computer and Information Managers, Computer Hardware Engineerings, Computer Network Architects, Computer Network Support Specialists, Programmers, Computer Operators, Computer Programmers, Computer Science Teachers, Computer Systems Analysts, Database Administrators, Graphic Designers, Information Security Analysts, Multimedia Artists and Animators, Network Systems Administrators, Software Developers

Related College Majors*: Artificial Intelligence and Robotics, Computer and Information Sciences, Computer Engineering, Computer Programming, Computer Science, Computer Software Engineering, Computer Systems Analysis, Data Processing, Information Science, Information Technology, System Administration, Webpage and Digital Media Design, Webmaster

**Find more related careers and college majors through your Xello Account*

Pathways: Network Systems, Information Support & Services, Web & Digital Communications, Programming & Software Development

SAMPLE Pathway: Information Support & Services

Pathway Courses

Year 1-2	Computer Literacy Business & Technology Concepts
Year 3-4	Computer Science Workplace Experience IT Tech Internship BACC

Related Electives

Media Physics Calculus Spanish Publication Production

Recommended Early College Credit Options

MATH 110 - Concepts of Math COMM 110 - Introduction to Communication: Presentation and Theory ENG 110 - Composition ENG 111 - Composition 2
--

Career Related Activities

Athletics Drama Tech Crew	Media E-Sports
------------------------------	-------------------

LAW, PUBLIC SAFETY, CORRECTIONS, & SECURITY

Planning, managing and providing legal, public safety, protective services and homeland security, including professional and technical support services.

Related Careers*: Animal Control Workers, Anthropologists, Child/Family/School Social Workers, Correctional Officers and Jailers, Court Reporters, Criminal Investigators and Special Agents, Criminal Justice Teachers, Detectives and Criminal Investigation, Fire Inspectors, Firefighters, Forensic Science Technicians, Forest Fire Fighting, Judicial Clerks, Lawyers, Legal Secretaries, Lifeguard/Ski Patrol Workers, Protective Service Workers, Police Officers, Police Detectives, Police Patrol Officers, Private Detectives, Security Guards, Sheriffs and Deputy Sheriffs, Title Examiners/Searchers, Transit and Railroad Police

Related College Majors*: Advanced Legal Research, US Law and Legal Studies, Banking/Corporate Finance Law, Corrections, Court Reporting, Criminal Justice, Criminal Science, Energy/Environmental/Natural Resources Law, Fire Protection, Fire Science, Juvenile Corrections, Law, Legal Administration, Legal Studies, Security Services, Tax Law

**Find more related careers and college majors through your Xello Account*

Pathways: Correction Services, Emergency & Fire Management Services, Law Enforcement Services, Legal Services, Security & Protective Services Pathway

SAMPLE Pathway: Law Enforcement Services

Pathway Courses

Year 1-2	History of Western Civilization Government & Civics World Geography
Year 3-4	Contemporary American Issues Women's Activism Government Service Workplace Experience

Related Electives

Voices of Contemporary Thought Spanish Sociology	Introduction to Public Presentation Psychology BACC: Criminal Justice
--	---

Recommended Early College Credit Options

MATH 110 - Concepts of Math MATH 111 - General Education Statistics COMS 110 - Communication: Process and Practice ENG 110 - Composition ENG 111 - Composition 2 HIST 201 - US History to 1877 HIST 202 - US History Since 1877

Career Related Activities

Athletics Scholastic Bowl National Honor Society	Speech Key/Interact Club Student Council
--	--

MANUFACTURING

Planning, managing and performing the processing of materials into intermediate or final products and related professional and technical support activities such as production planning and control, maintenance and manufacturing/process engineering.

Related Careers*: Biological Technicians, Chemical Technicians, Civil Engineering, Computer Automated Repairer, Construction Workers, Electrical Engineering Technician, Elevator Installers and Repairers, Fashion Designers, Foundry Mold Caretakers, Furniture Finishers, Industrial Machinery Management, Interior Designers, Jewelers, Maintenance Workers, Occupational Health Specialists, Sheet Metal Workers, Software Developers, Telecommunications Line Installers, Tool and Die Makers, Upholsterers, Watch Repairers, Welders, Woodworkers

Related College Majors*: Appliance Installation and Repair Technology, Chemical Technology, Computer Software Technology Electrical Engineering Technology, Furniture Design, Heavy/Industrial Equipment Maintenance, Hydraulic and Fluid Power Technology, Industrial Mechanics, Industrial Safety, Laser and Optical Technology, Manufacturing Technology, Nuclear Power Technology, Plastics Engineering, Quality Control, Robotics Technology, Textile Science, Welding Technology, Woodworking

**Find more related careers and college majors through your Xello Account*

Pathways: Production, Manufacturing Production Process Development, Maintenance, Installation & Repair, Quality Assurance, Logistics & Inventory Control, Health, Safety & Environmental Assurance Pathway

SAMPLE Pathway: Maintenance, Installation & Repair

Pathway Courses

Year 1-2	Introduction to Manufacturing and Technology Ag Mech and Construction Welding I
Year 3-4	Welding II Manufacturing and Technology Independent Study Workplace Experience aligned with specialized maintenance field

Related Electives

Spanish I	Interior Design: Residential and Commercial Spaces
BACC: Automotive Technology, Robotics and Engineering, or Welding	

Recommended Early College Credit Options

Work towards specialized certifications

Career Related Activities

Athletics Key/Interact Club Be the Change

MARKETING

Planning, managing and performing marketing activities to reach organizational objectives.

Related Careers*: Advertising and Promotions Managers, Appraisers, Computer Programmers, Counter Clerks, Product Promotions, Sales Workers, Interior Designers, Lodging Managers, Marketing Research Analysts, Event Planners, Real Estate Brokers, Sales Engineers, Sales Managers, Stock Clerks, Survey Researchers, Transportation Attendants, Travel Agents, Travel Guides, Wholesale and Retail Buyers

Related College Majors*: Apparel Marketing Management, Auctioneering, E-commerce, Fashion and Fabric Consultant, Fashion Merchandising, International Marketing, Marketing Research, Marketing, Real Estate, Retail Operations, Sales/Distribution/Marketing Operations
**Find more related careers and college majors through your Xello Account*

Pathways: Marketing Management, Professional Sales, Merchandising, Marketing Communications, Marketing Research

SAMPLE Pathway: Marketing Communications

Pathway Courses

Year 1-2	Art I - II Business and Technology Concepts Media I
Year 3-4	Art III - IV Publication Production Principles of Marketing Marketing Workplace Experience Entrepreneurship

Related Electives

Media II	Textiles and Design	Psychology
Accounting 1	Spanish	Sociology
Principles of Economics	Journalism	
Creative Writing	Voices of Contemporary Thought	
Introduction to Public Presentation	Contemporary American Issues	

Recommended Early College Credit Options

MATH 110 - Concepts of Math
MATH 111 - General Education Statistics
COMM 110 - Introduction to Communication: Presentation and Theory
ENG 110 - Composition
ENG 111 - Composition 2
BUS 110 - Introduction to Business
PSY 110 - Introduction to Psychology

Career Related Activities

Athletics	Key/Interact Club	Student Council
Scholastic Bowl	Be the Change	Drama Tech

SCIENCE, TECHNOLOGY, ENGINEERING, & MATH

Planning, managing and providing scientific research and professional and technical services (e.g., physical science, social science, engineering) including laboratory and testing services and research and development services.

Related Careers*: Aerospace Engineers, Anthropologists, Archeologists, Archivists, Biochemists, Biological Scientists, Chemical Engineers, Civil Engineers, Computer Programmers, Drafters, Economists, Electrical Engineers, Environmental Engineers, Epidemiologists, Geoscientists, Hydrologists, Industrial Engineers, Life Scientists, Marine Engineers, Material Engineers, Mathematicians, Mechanical Engineers, Medical Scientists, Microbiologists, Natural Science Managers, Nuclear Engineers, Physicists, Product Safety Engineers, Psychologists, Sociologists, Software Developers, Statisticians, Zoologists

Related College Majors*: Aerospace Engineering, Anatomy, Ancient Studies, Animal Behavior, Anthropology, Archeology, Astronomy, Astrophysics, Biochemistry, Biophysics, Botany, Cell Physiology, Cell and Molecular Biology, Chemical Engineering, Chemistry, Civil Engineering, Demography, Ecology, Economics, Endocrinology, Genetics, Geochemistry, Gerontology, Industrial Engineering, International Economics, Marine Biology, Mathematics, Mechanical Engineering, Meteorology, Molecular Biology, Nuclear Physics, Oceanography, Pathology, Pharmacology, Physics, Plant Physiology, Statistics, Structural Engineering, Theoretical Physics, Toxicology, Zoology

**Find more related careers and college majors through your Xello Account*

Pathways: Engineering & Technology, Science & Mathematics Pathway

SAMPLE Pathway: Engineering and Technology

Pathway Courses

Year 1-2	Computer Literacy Geometry Trigonometry
Year 3-4	Pre-Calculus AP Calculus Physics BACC: Robotics and Engineering Workplace Experience aligned with specialized engineering field

Related Electives

Chemistry	Spanish	BSAA Science	Principles of Economics
-----------	---------	--------------	-------------------------

Recommended Early College Credit Options

MATH 111 - General Education Statistics	ENG 110 - Composition	ENG 111 - Composition 2
COMS 110 - Communication: Process and Practice		

Career Related Activities

Athletics	Key/Interact Club	Scholastic Bowl	National
Honor Society	Drama Tech	E-Sports	
Student Council			

TRANSPORTATION, DISTRIBUTION, & LOGISTICS

Planning, management and movement of people, materials and goods by road, pipeline, air, rail and water and related professional and technical support services, such as transportation infrastructure planning and management, logistics services, mobile equipment and facility maintenance.

Related Careers*: Aerospace Engineers, Air Traffic Controllers, Automotive Service Technicians, Bicycle Technicians, Boilermakers, Captains/Mates/Pilots of Water Vessels, Commercial Divers, Commercial Pilots, Diesel Mechanics, Flight Attendants, Heavy Traffic Truck Drivers, Motorcycle Mechanics, Occupational Health Specialists, Outdoor Power Equipment Mechanic, Print Binding and Finishing, Rail Yard Engineers, Boat Captains, Traffic Technicians, Transportation Managers

Related College Majors*: Aeronautical Engineering, Air Traffic Controller, Airline Flight Attendant, Alternative Fuel Technology, Aviation, Construction and Heavy Equipment Operation, Diesel Mechanics, Engine Machinist, Marine Maintenance, Small Engine Mechanics, Traffic/Customs/Transportation Technician, Truck and Bus Driver, Vehicle Maintenance

**Find more related careers and college majors through your Xello Account*

Pathways: Transportation Operations, Logistics Planning & Management Services, Warehousing & Distribution Center Operations, Facility & Mobile Equipment Maintenance, Transportation Systems/Infrastructure Planning, Management & Regulation, Health, Safety & Environmental Management, Sales & Service

SAMPLE Pathway: Facility & Mobile Equipment Maintenance

Pathway Courses

Year 1-2	Ag Mech and Construction Introduction to Manufacturing and Technology Welding I
Year 3-4	Welding II Manufacturing and Technology Independent Study Workplace Experience aligned with specialized facility/equipment maintenance field

Related Electives

Spanish I BACC: Automotive Technology BACC: Robotics and Engineering BACC: Welding

Recommended Early College Credit Options

MATH 111 - General Education Statistics COMM 110 - Introduction to Communication: Presentation and Theory BUS 110 - Introduction to Business
--

Career Related Activities

Athletics Key/Interact Club

COURSE DESCRIPTIONS

ART COURSES

The Fieldcrest High School art program is designed to help students develop their individual abilities to a higher degree and to provide artistic experiences which will prepare them to go on to higher levels of education in visual arts. Our students will be able to compete with students of similar skill if they choose to pursue a career in the visual arts.

INTRODUCTION TO ART (1110)

Credits: 1

Prerequisites: None

Weighted Grade: No

NCAA: No

CTE Course: No

State Code: 05155A000

*Includes a Lab Fee

This course introduces the elements of art which include line, shape, form, value, color, space and texture and the principles of art which include: balance, rhythm, emphasis, movement, repetition, contrast, and unity. Students learn the fundamentals of drawing and painting. Drawing includes contour line, observational, and portrait drawing, value development, positive-negative space, abstracted forms, and linear perspective. Painting includes color theory, theme development, and materials control through the use of different types of paint. Sketchbooks are used as the basis for all project development and include artist research, drawing practices, & written self-evaluations. Students will present a showing of their best works at an Art Exhibition.

MEETS GRADUATION REQUIREMENT

ELECTIVE

PAINTING & DRAWING (1150)

Credits: 1

Prerequisites: Introduction to Art

Weighted Grade: No

NCAA: No

CTE Course: No

State Code: 55155A000

*offered on even years

*Includes a Lab Fee

This course provides students the knowledge and opportunity to explore and create individual works of painting and drawing. In keeping with this attention on two-dimensional work, students typically work with several media (such as pen-and-ink, pencil, chalk, watercolor, tempera, oils, acrylics, etc.) It also provides exploration of career opportunities in the art world and the study of major artists, art movements, and styles.

MEETS GRADUATION REQUIREMENT

ELECTIVE

**PRINTMAKING
(1151)**

Credits: 1

Prerequisites: Introduction to Art, Painting & Drawing

Weighted Grade: No

NCAA: No

CTE Course: No

State Code: 55155A000

*offered on odd years

*Includes a Lab Fee

The Printmaking course provides students with experience in a variety of traditional, non-traditional and digital printmaking media, techniques, and processes. It emphasizes fundamental processes of artistic expression through the creation of realistic and abstract prints. Students learn and practice responding to their own art and that of others including master printmakers through analysis, critique, and interpretation for the purpose of reflecting on and refining work.

MEETS GRADUATION REQUIREMENT

ELECTIVE

**SCULPTURE
(1152)**

Credits: 1

Prerequisites: Introduction to Art

Weighted Grade: No

NCAA: No

CTE Course: No

State Code: 05161A000

*offered on even years

*Includes a Lab Fee

This course focuses on creating three-dimensional works. It explores representational and abstract sculpture through subtractive (carving), additive (modeling), and assemblage techniques in one or more media. It also incorporates study of the elements of art and principles of design, historical and contemporary sculpture and sculptors from a worldwide perspective, and the process of responding to art through analysis, critique, and interpretation.

MEETS GRADUATION REQUIREMENT

ELECTIVE

CERAMICS (1153)

Credits: 1

Prerequisites: Introduction to Art; Sculpture

Weighted Grade: No

NCAA: No

CTE Course: No

State Code: 05159A000

*offered on odd years

*Includes a Lab Fee

This course focuses on creating three-dimensional works. It engages students in learning experiences that include the historical and cultural context of ceramics, aesthetic inquiry, and creative production. It provides knowledge of ceramic techniques (e.g., kiln firing and glazing) and processes with an emphasis on creative design and craftsmanship.

MEETS GRADUATION REQUIREMENT

ELECTIVE

**INTERIOR DESIGN:
RESIDENTIAL &
COMMERCIAL SPACES
(1730)**

Credits: 1

Prerequisites: None

Weighted Grade: No

NCAA: No

CTE Course: Yes

State Code: 05193A001

*offered on odd years

Emphasis will be placed on learning experiences designed to provide students with a basic understanding of knowledge and skills used in the housing and furnishing field including the management of living environments to meet the needs of the occupants. Learning experiences include selection and care of home, furnishings, equipment and accessories, environmental energy consumption, socio-economic factors, trends, values, standards of sanitation, cost factors that deal with hazardous areas in the living environment, and many other factors which influence environmental needs and making sound fiscal decisions that deal with housing.

MEETS GRADUATION REQUIREMENT

ELECTIVE

**PUBLICATION
PRODUCTION
(1219)**

Credits: 1

Prerequisites: None

Weighted Grade: No

NCAA: No

CTE Course: Yes

State Code: 11104A001

*offered on even years

Publication Production provides students with the knowledge and skills necessary to produce a school newspaper, yearbook, literary magazine, or other printed publication. Students may gain experience in several components (writing, editing, layout, production, and so on). They will also learn business skills as they study the cost of publishing and understanding the publishing industry.

MEETS GRADUATION REQUIREMENT

ELECTIVE

**ICC ART APPRECIATION
(1140)**

Credits: 1

(ICC Credit- Art 110)

Prerequisites: Approved

Accuplacer or SAT reading placement score

Weighted Grade: Yes

NCAA: No

CTE Course: No

State Code: 05154A000

*Includes Dual Credit Fees

This course is a survey of the visual arts, exploring the nature, language and history of art, in relation to cultural, humanistic, and aesthetic values. Lectures are reinforced by written assignments, presentations, gallery visits, critical evaluations of art, and introductory art experiences. This course is acceptable for Humanities credit in the area of Fine Arts. It is intended for general studies of non-majors.

MEETS GRADUATION REQUIREMENT

ELECTIVE

**INDEPENDENT STUDY
ART (1141)**

Credits: 1

Prerequisites: By Application

Weighted Grade: No

NCAA: No

CTE Course: No

State Code: 05154A000

The student taking this course partners with the instructor to develop an individual plan of study in which they expand their expertise in a particular form or style, to explore a topic in greater detail, or to develop more advanced skills.

MEETS GRADUATION REQUIREMENT

ELECTIVE

**COMMERCIAL &
ADVERTISING ART
INDEPENDENT STUDY
(1146)**

Credits: 1

Prerequisites: By application

Weighted Grade: No

NCAA: No

CTE Course: Yes

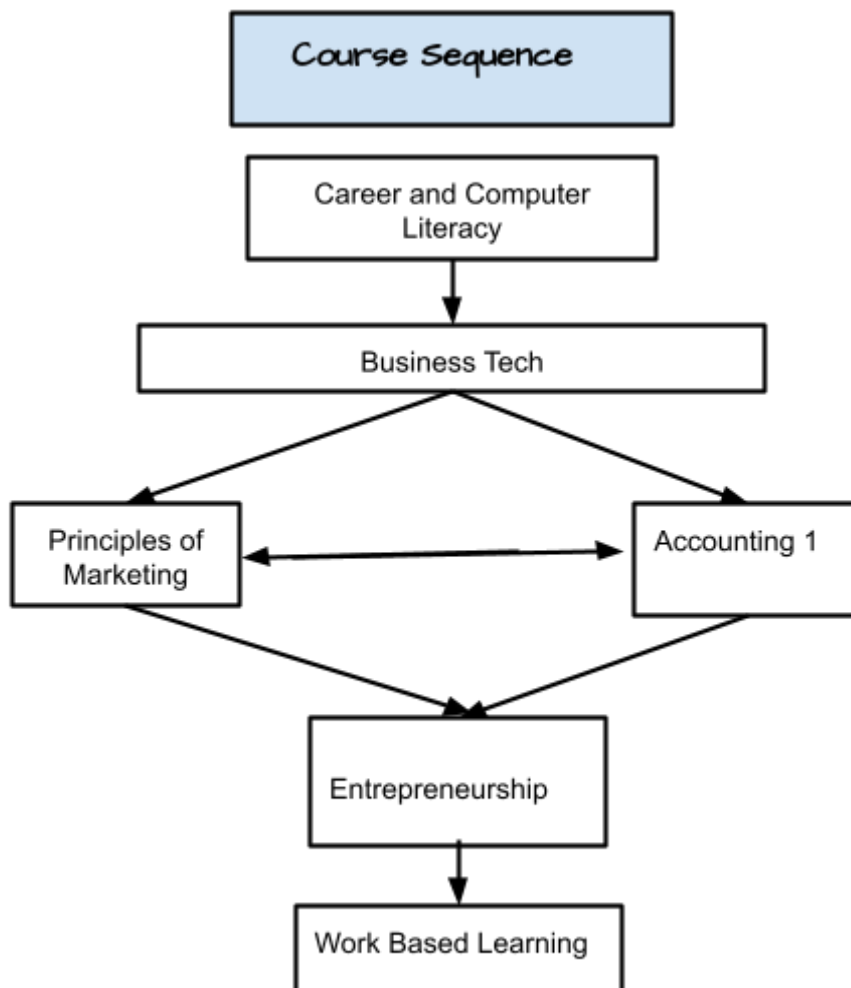
State Code: 11155A001

This course is designed to provide students with the skills needed for a career in the fields of advertising, commercial art, graphic design, website development, and graphic illustrator. Students learn to apply artistic design and layout principles along with text, graphics, drawing, rendering, sound, video, and 2D/3D animation integration to develop various print, video, and digital products. Students use hardware and software programs to create, manipulate, color, paint, and layer scanned images, computer graphics, and original artwork.

Students use hardware and software to capture, edit, create, and compress audio and video clips. Students use animation and 2D/3D hardware and software to create animated text, graphics, and images. Students apply artistic techniques to design and create advertisements, displays, publications, technical illustrations, marketing brochures, logos, trademarks, packaging, video graphics, and computer-generated media.

BUSINESS AND TECHNOLOGY COURSES

The Business and Technology curriculum consists of a program of study whose purpose is to provide students with the skills, attitudes and competencies to be successful in post-secondary study, the workforce, and as adult consumers. Through the business and computer courses offered, students begin to learn the knowledge and skills in personal finance, accounting, marketing, computer software, management, and entrepreneurship.



CAREER & COMPUTER LITERACY (1251)

Credits: .5

Prerequisites: None

Weighted Grade: No

NCAA: No

CTE Course: No

State Code: 10010A000

This course rotates each 9 weeks with Driver's Education and provides skills and strategies to use computers and technology efficiently and ethically. Additionally, students will engage in career exploration and activities to build their study skills and critical thinking to support their academic success.

MEETS GRADUATION REQUIREMENT

ELECTIVE

BUSINESS & TECHNOLOGY CONCEPTS (1210)

Credits: 1

Prerequisites: Career & Computer Literacy

Weighted Grade: No

NCAA: No

CTE Course: Yes

State Code: 12051A001

This orientation-level course will provide an overview of business marketing and management in a global economy. Topics will include business ownership, finance, management, marketing, administration, production, and careers. Students will be introduced to business ethics and workplace skills. Projects will be completed both individually and as a team member. This course is not intended to meet the consumer education requirement.

MEETS GRADUATION REQUIREMENT

ELECTIVE

PRINCIPLES OF MARKETING (1245)

Credits: 1

Prerequisites: Business and Technology; Sophomore Standing

Weighted Grade: No

NCAA: No

CTE Course: Yes

State Code: 12152A001

This orientation-level course is designed to provide the student with an overall knowledge of marketing concepts. Course content includes general marketing principles such as purchasing, distribution, and sales. Students will explore kinds of markets; market identification; product planning, packaging, and pricing; and business management. A major emphasis will include focus on the sports and entertainment areas.

MEETS GRADUATION REQUIREMENT

ELECTIVE

ACCOUNTING I (1230)

Credits: 1

Prerequisites: Junior Standing

Weighted Grade: No

NCAA: No

CTE Course: Yes

State Code: 12104A001

Students will be introduced to the basic accounting equation and skills used in computing, classifying, recording, verifying, and maintaining numerical data. The course includes information on how to keep financial records, summarize them for interpretation, and analyze them for decision making. Instruction is given in the completion of a fiscal summary and the use of typical business forms.

MEETS GRADUATION REQUIREMENT

ELECTIVE

**ENTREPRENEURSHIP
(1252)**

Credits: 1
Prerequisites: Accounting I,
Principles of Marketing
Weighted Grade: No
NCAA: No
CTE Course: Yes
State Code: 12053A001

This course acquaints students with the knowledge and skills necessary to own and operate their own businesses. Topics from several fields typically form the course content: economics, marketing principles, human relations and psychology, business and labor law, legal rights and responsibilities of ownership, business and financial planning, finance and accounting, and communication.

MEETS GRADUATION REQUIREMENT **ELECTIVE**

WORK-BASED LEARNING

Credits: 1 per semester
Prerequisites: Senior Status;
By Application only
Weighted Grade: No
NCAA: No
CTE Course: Yes
State Code: See [Work Experience Courses](#)

Workplace Experience courses offer students the opportunity to explore careers and understand the nature of work through exposure to the workplace aligned with their future career goals. They are regulated by the expectations of a Career Development Experience as defined by the Postsecondary and Workforce Readiness Act and personalized for students planning to pursue a career in a related field. Students will meet as a group once a week and will work individually with the WBL Teacher in designing and monitoring their experience.

**ICC INTRODUCTION TO
BUSINESS (1250)**

Credits: 1
(ICC Credit - BUS 110)
Prerequisites: Junior
Standing; Approved
Accuplacer or SAT reading
placement score
Weighted Grade: Yes
NCAA: No
CTE Course: Yes
State Code: 12051A001

This course covers the factual and informational survey of business designed to give the student a background for understanding the principles and practices governing the operation of modern business.
(ONLINE ONLY)

MEETS GRADUATION REQUIREMENT **ELECTIVE**

EDUCATION COURSES

The Fieldcrest High School education program is designed to help students develop their individual interests in an educational career and to provide instructional experiences which will prepare them to go on to advanced studies in education. Our students will be able to compete with students of similar skill if they choose to pursue a career in Education.

INTRODUCTION TO AMERICAN EDUCATION (2610)

Credits: 1

(ICC Credit - EDU 111)

Prerequisites: Junior Standing; Approved Accuplacer or SAT reading placement score

Weighted Grade: No

NCAA: No

CTE Course: No

State Code: 19151A001

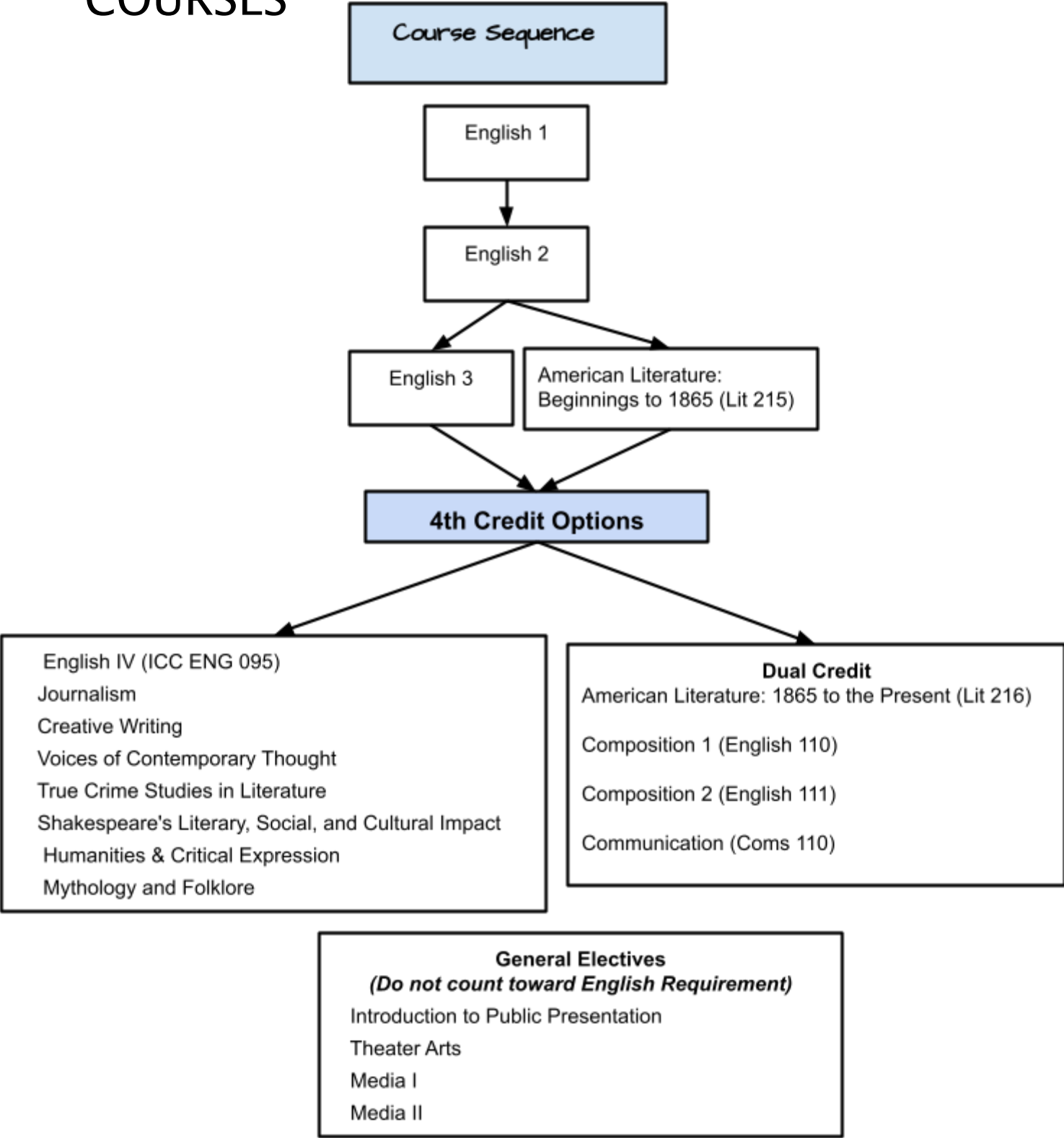
*Includes Dual Credit Fees

An introduction to the field of American education, this course will cover history, philosophy, financing, legal aspects, and current issues of American education. Students will be given a general overview of how American schools came to be and how they function today. They will be introduced to the Illinois Professional Teaching Standards. Students will participate in a minimum of 15 documented clinical experiences involving observation of child learners and practitioners at work, according to specified guidelines. A cleared background check will be required in order to participate in the clinical experiences.

MEETS GRADUATION REQUIREMENT

ELECTIVE

ENGLISH, COMMUNICATION, and MEDIA COURSES



ENGLISH I (1410)

Credits: 1

Prerequisites: None

Weighted Grade: No

NCAA: Yes

CTE Course: No

State Code: 01001A000

This writing intensive course focuses on the central themes of maturation, diversity, and the development of compassion, empathy, and respect for others. It also includes an intensive unit in Computer Literacy. Students will build a solid foundation in the structure of the English language in grammar, vocabulary, word usage, computer literacy, and the mechanics of writing. Students will survey literature from a variety of genres, including fiction and nonfiction prose and poetry. Students will write for a variety of purposes and experience public speaking.

MEETS GRADUATION REQUIREMENT

ELECTIVE

ENGLISH II (1420)

Credits: 1

Prerequisites: English I

Weighted Grade: No

NCAA: Yes

CTE Course: No

State Code: 01002A000

In this writing intensive course, students will further develop writing, speaking, and listening skills in the context of world literature. The overall theme of this course is to empower ourselves to change our communities and impact our world. Students will apply critical thinking methods to infer meaning and present logical analysis of literary and non-fiction texts. They will write and publicly speak for a range of tasks, purposes, and audiences several times throughout the course applying evidence from readings and life experience to answer essential questions.

MEETS GRADUATION REQUIREMENT

ELECTIVE

ENGLISH III (1430)

Credits: 1

Prerequisites: English II

Weighted Grade: No

NCAA: Yes

CTE Course: No

State Code: 01003A000

This writing intensive course further develops students' sophisticated reading, writing, speaking, and listening skills. This course offers a study of American works and rhetoric through contemporary times. Students will analyze a range of text types and formats such as documentaries, essays, novels, and speeches. Students will write compositions, complete major projects, engage in Socratic seminars and debates, deliver presentations, and prepare for state testing and college.

MEETS GRADUATION REQUIREMENT

ELECTIVE

**AMERICAN LITERATURE:
BEGINNINGS TO 1865
(1470)**

Credits: 1
(ICC Credit - Lit 215)
Prerequisites: English II;
Junior standing; Approved
Accuplacer or SAT reading
placement score
Weighted Grade: Yes
NCAA: Yes
CTE Course: No
State Code: 01054A000
*Includes Dual Credit Fees

This course examines American Literature from the beginnings of American Lit to 1865. Students will analyze representative works and genres of literature produced before the Civil War. They will understand the evolution of a variety of social issues represented in primary texts as well as the impact of social groups on literary reception, apply a variety of critical theories to literary works and research/write rhetorically effective analyses and arguments pertaining to early American Literature.

MEETS GRADUATION REQUIREMENT

ELECTIVE

**AMERICAN LITERATURE
SINCE 1865
(1471)**

Credits: 1
(ICC Credit - LIT 216)
Prerequisites: English II;
Junior standing; Approved
Accuplacer or SAT reading
placement score
Weighted Grade: Yes
NCAA: Yes
CTE Course: No
State Code: 01054A000
*Includes Dual Credit Fees

This course focuses on American Literature from 1865 to the present. Students will analyze representative works and genres of literature produced since the Civil War. They will understand the evolution of a variety of social issues represented in primary texts as well as the impact of social groups on literary reception, apply a variety of critical theories to literary works and research/write rhetorically effective analyses and arguments pertaining to American Literature.

MEETS GRADUATION REQUIREMENT

ELECTIVE

ENGLISH IV (1439)

Credits: 1
(ICC Transition Course)
Prerequisites: English III or
American Literature 215
Weighted Grade: No
NCAA: Yes
CTE Course: No
State Code: 01004A001

This writing intensive course is designed for the senior level student intending to enter the workforce, the military, a community college or technical school, rather than a four-year college/university, following high school graduation. English IV will mirror the Illinois Community College Course, (Preparation for College Level Reading and Writing 095) in order for students to utilize this course as a transitional English Course.

MEETS GRADUATION REQUIREMENT

ELECTIVE

COMPOSITION I (1440)

Credits: 1

(ICC Credit - ENG 110)

Prerequisites: English III or American Literature 215;

Senior standing; Approved Accuplacer or SAT reading placement score

Weighted Grade: Yes

NCAA: Yes

CTE Course: No

State Code: 01102A000

*Includes Dual Credit Fees

This writing intensive course is designed for the college bound student wishing to earn community college credit. Students will reinforce the logic and critical – thinking skills that accompany good writing. They will write essays through critical reading, discussion, exercises, conferences, and revision. Units will focus on expressive, referential, and persuasive compositions and follows the syllabus for Illinois Central College ENG 110.

MEETS GRADUATION REQUIREMENT

ELECTIVE

COMPOSITION II (1441)

Credits: 1

(ICC Credit - ENG 111)

Prerequisites: Composition I;

Senior standing; Approved Accuplacer or SAT reading placement score

Weighted Grade: Yes

NCAA: Yes

CTE Course: No

State Code: 01102A000

*Includes Dual Credit Fees

This writing intensive course is designed for the college bound student wishing to earn community college credit. Students will reinforce the logic and critical – thinking skills that accompany good writing. They will write essays through critical reading, discussion, exercises, conferences, and revision. The course focuses on argumentative compositions and follows the syllabus for Illinois Central College ENG 111.

MEETS GRADUATION REQUIREMENT

ELECTIVE

CREATIVE WRITING (1433)

Credits: 1

Prerequisites: None

Weighted Grade: No

NCAA: No

CTE Course: No

State Code: 01104A000

*offered on odd years

Students interested in writing for personal enjoyment or are interested in writing for publication will benefit in taking this class. Students will have the opportunity to develop and improve their technique and individual style in poetry, short story, drama, essays, and other forms of prose.

MEETS GRADUATION REQUIREMENT

ELECTIVE

JOURNALISM (1432)

Credits: 1

Prerequisites: None

Weighted Grade: No

NCAA: Yes

CTE Course: No

State Code: 11101A000

*offered on even years

Students are introduced to the historical importance of journalism in America. They study the basic principles of print and online journalism as they examine the role of printed news media in our society. They learn investigative skills, responsible reporting and journalistic writing techniques as they read, respond to, and write their own news and feature articles. Students conduct interviews, research, write, and design their own publications.

MEETS GRADUATION REQUIREMENT

ELECTIVE

MYTHOLOGY AND FOLKLORE (1473)

Credits: 1

Prerequisites: English I;

Sophomore Standing

Weighted Grade: No

NCAA: No

CTE Course: No

State Code: 01061A000

Mythology and Folklore have influenced various cultures of the world since ancient times. Students will be instructed on the importance of mythology in relation to the cultures and the values of society. Students will develop a better comprehension of ancient writings, explore the significance of those writing in terms of cultural values, and construct their own creative myth in order to practice the components and purposes of mythology. This course provides the students with a general introduction to: Mythology of (a) ancient Greece and Rome, (b) Egypt, Africa and the Middle East; (c) Asia in comparison to the Western Cultures; (d) Europe including Norse Mythology; and (e) African folklore in comparison to that of the Native American tribes.

MEETS GRADUATION REQUIREMENT

ELECTIVE

VOICES OF CONTEMPORARY THOUGHT (1443)

Credits: 1

Prerequisites: English II

Weighted Grade: No

NCAA: No

CTE Course: No

State Code: 01061A000

*offered on odd years

Through the voices of a diverse group of authors, thinkers, and cultural figures, students will analyze inclusive contemporary fiction and nonfiction pieces, including short stories, plays, novels and poetry. The course emphasizes discovering universal thematic connections between 20th and 21st century literature of varied cultures, genders, class, and ability. Students will develop writing skills in literary analysis and research as well as speaking and listening skills through Socratic seminar discussions and presentations.

MEETS GRADUATION REQUIREMENT

ELECTIVE

TRUE CRIME STUDIES IN LITERATURE (1474)

Credits: 1

Prerequisites: English II

Weighted Grade: No

NCAA: No

CTE Course: No

State Code: 01061A000

*offered on even years

In this multimedia course, students will explore the significance of crime in North America as a narrative form. This class will trace the roots of this nonfiction form including reading and analysis of Truman Capote's *In Cold Blood* to the current TV and Podcast series that explore the genre. This course will examine how a culture's changing relationship to "real life" crime over the years can help us understand the fundamental and complex role criminality plays in defining a people at a given point in time.

MEETS GRADUATION REQUIREMENT

ELECTIVE

SHAKESPEARE'S LITERARY, SOCIAL, AND CULTURAL IMPACT (1472)

Credits: 1

Prerequisites: English III or American Literature 215

Weighted Grade: No

NCAA: No

CTE Course: No

State Code: 01060A000

*offered on odd years

The course focuses on a variety of Shakespeare texts through the lens of performance and cultural adaptations. Students will analyze language, costume, plot, and characters in addition to varying interpretations. Students will write compositions, complete major projects, engage in Socratic seminars and debates, deliver presentations or performances.

MEETS GRADUATION REQUIREMENT

ELECTIVE

HUMANITIES & CRITICAL EXPRESSION (1475)

Credits: 1

Prerequisites: English III or American Literature 215

Weighted Grade: No

NCAA: No

CTE Course: No

State Code: 01060A000

*offered on even years

In this course, students will examine the human condition and how humans are inspired to create. Through the study of literature, philosophy, and the visual and performing arts, students will investigate the human creative response to the world, society, religious tradition, and the human experience. Students will examine how the artist is influenced by and influences history and culture.

MEETS GRADUATION REQUIREMENT

ELECTIVE

ICC INTRODUCTION TO COMMUNICATION: PRESENTATION AND THEORY (1435)

Credits: 1
(ICC Credit - COMM 110)
Prerequisites: Junior Standing; Approved Accuplacer or SAT reading placement score
Weighted Grade: Yes
NCAA: Yes
CTE Course: No
State Code: 01155A000

This course provides the foundations for a theoretical understanding about interpersonal communication, intercultural communication, group communication, nonverbal communication, verbal communication, intrapersonal communication, and rhetorical strategies. This course also provides practical application in public speaking and group membership.

MEETS GRADUATION REQUIREMENT ELECTIVE

INTRODUCTION TO PUBLIC PRESENTATION (1415)

Credits: 1
Prerequisites: None
Weighted Grade: No
NCAA: Yes
CTE Course: No
State Code: 01151A000
*offered on odd years

The class goal is to learn about oral expression as a tool to equip students to change their communities and impact their world. The course will emphasize the differences between oral and written communication and speaking to inform versus speaking to persuade. The course will examine researching skills using MLA citation style, refine outlining skills, and provide an introduction to the common speech types – extemporaneous, manuscript, impromptu, and memorized.

MEETS GRADUATION REQUIREMENT ELECTIVE

THEATER ARTS (1445)

Credits: 1
Prerequisites: None
Weighted Grade: No
NCAA: No
CTE Course: No
State Code: 05052A000
*offered on even years

Students gain an understanding of theater including: techniques in acting and creation of original dramatic works, major developments in dramatic literature, major playwrights, the formation of theater as a cultural tradition, and appreciation of theater. They also engage in analysis of dramatic pieces and the role of theater in society. Additionally, students will explore theatrical production and management through concepts such as set design, costuming, theatrical design, rehearsal and personnel management, casting, directing, script interpretation, business management, and marketing.

MEETS GRADUATION REQUIREMENT ELECTIVE

MEDIA I (1434)

Credits: 1

Prerequisites: Sophomore Standing

Weighted Grade: No

NCAA: No

CTE Course: Yes

State Code: 11051A003

Students will explore different forms of media including their history and development. They will learn the basics of video production including script writing, camera operation, performance, and basic video editing. A large portion of the class will be aimed at helping students learn about broadcast journalism through hands-on planning and production of stories for THE KNIGHTLY NEWS. The class is project-oriented and requires students to possess a degree of self-motivation and willingness to work in groups. This class will require out of school time for the coverage of stories.

MEETS GRADUATION REQUIREMENT

ELECTIVE

MEDIA II (1436)

Credits: 1

Prerequisites: Media I

Weighted Grade: No

NCAA: No

CTE Course: Yes

State Code: 11103A001

Students will build upon the knowledge learned in Media I including learning more of the technical and legal aspects of various media, including radio, television, print, and film. Students will learn about writing requirements for various media. A large portion of the class will be devoted to the study of more advanced production techniques in broadcast journalism including stories for and assisting in the production of THE KNIGHTLY NEWS. Additionally students will help teachers and community members create video and multimedia projects for use in classes or community. The class is project-oriented, offering the students room for creativity and requires students to possess a degree of self-motivation and willingness to work in groups. This class will require out of school time for the coverage of stories.

MEETS GRADUATION REQUIREMENT

ELECTIVE

FAMILY AND CONSUMER SCIENCE COURSES

Family and Consumer Science introduces students to the world of work and occupations in Family and Consumer Science, as well as life skills for independent living. It emphasizes the need for students to prepare for the multiple roles that must be played in today's society. It further emphasizes the importance of knowledge from the Family and Consumer Science fields to all areas of life.

TEXTILES AND DESIGN (1711)

Credits: 1

Prerequisites: None

Weighted Grade: No

NCAA: No

CTE Course: Yes

State Code: 19201A001

*Includes a Lab Fee

This course is designed to provide basic knowledge and understanding of the design, development, and production of textile products. Through hand on and projects based learning experiences students will discover fiber characteristics, fabric construction methods, elements of science and design in textiles and apparel, and basic construction skills used in interior furnishing and apparel industries. This course includes awareness and investigation of careers and industry trends in textiles. Students will construct a variety of pillows and pajama pants or shorts, recycling clothing, pattern selection and use, as well as items with zippers and or buttons.

MEETS GRADUATION REQUIREMENT

ELECTIVE

NUTRITION AND CULINARY ARTS I (1712)

Credits: 1

Prerequisites: None

Weighted Grade: No

NCAA: No

CTE Course: Yes

State Code: 16054A001

*Includes a Lab Fee

This course includes classroom and laboratory experiences needed to develop a knowledge and understanding of culinary principles and nutrition for people of all ages. Courses content encompasses: food service and preparation management using decision making process; meeting basic needs by applying nutrition concepts; meeting health, safety, and sanitation requirements; maximizing resources when planning/preparing/reserving/serving food; applying hospitality skills; analyzing nutritional needs in relationship to change; and careers in nutrition and culinary arts, including entrepreneurship investigations. Labs will explore a variety of milk, yogurt, cheese and egg products as well as baking including cookies, pies cakes and quick breads, fruits and vegetables.

MEETS GRADUATION REQUIREMENT

ELECTIVE

**NUTRITION AND
CULINARY ARTS II
(1731)**

Credits: 1

Prerequisites: Nutrition and
Culinary Arts I

Weighted Grade: No

NCAA: No

CTE Course: Yes

State Code: 16054A002

*Includes a Lab Fee

This course provides principles of application into the hospitality industry, including nutrition, culinary and entrepreneurial opportunities.

Course content includes the following: selection, purchase, preparation, and conservation of food, dietary needs and trends, regional and international cuisine, safety and sanitation, and careers in food service industries. All of these concepts can be explored through laboratory experiences in yeast breads, meats (beef, pork and poultry) foreign foods, and herbs and spices.

MEETS GRADUATION REQUIREMENT

ELECTIVE

**PERSONAL FINANCE &
ADULT LIVING (1234)**

Credits: 1

Prerequisites: Junior
Standing

Weighted Grade: No

NCAA: No

CTE Course: No

State Code: 19259A001

This course focuses on the understanding and skills needed to make responsible personal and financial decisions as adults in the home, community, and workplace. Topics include the following: life stages & styles, values, social concerns, dealing with stress, budgeting, taxes, banking, savings, credit, asset ownership, investments, transportation, housing, and insurance. The course also includes career research and the job search process. ***This course satisfies the Consumer Education requirement.***

MEETS GRADUATION REQUIREMENT

ELECTIVE

**PARENTING
(1715)**

Credits: 1

Prerequisites: Sophomore
Standing

Weighted Grade: No

NCAA: No

CTE Course: Yes

State Code: 19052A001

*Includes a Lab Fee

Parenting addresses the knowledge, skills, attitudes, and behaviors associated with supporting and promoting optimal growth and development of infants and children. The focus is on research-based nurturing and parenting practices and skills, including brain development research, that support positive development of children. Students will explore opportunities in human services and education-related careers and develop a career portfolio. Parenting emphasizes the parent perspective. Topics include teen parenting, parenting styles, prenatal development, and birth. Students are required to participate in the BABY project.

MEETS GRADUATION REQUIREMENT

ELECTIVE

**CHILD GROWTH AND
DEVELOPMENT
(1732)**

Credits: 1

Prerequisites: Sophomore
Standing

Weighted Grade: No

NCAA: No

CTE Course: Yes

State Code: 19051A001

Child Development addresses the knowledge, skills, attitudes, and behaviors associated with supporting and promoting optimal growth and development of infants and children. The focus is on research-based nurturing and parenting practices and skills, including brain development research, that support positive development of children. Students will explore opportunities in human services and education-related careers and develop a career portfolio. Child Growth and Development emphasizes the intellectual, social, emotional, and physical development of the child.

MEETS GRADUATION REQUIREMENT

ELECTIVE

FOREIGN LANGUAGE COURSES

In today's global economy, the ability to speak multiple languages helps individuals succeed in the world and interact with a variety of people. It is important for students to be aware that a number of colleges have a minimum requirement of two years of the same foreign language for admissions. It takes a very long time to master a foreign language, and time beyond those initial years is necessary for any student who truly wishes to utilize language skills in the workplace.

SPANISH I (1511)

Credits: 1

Prerequisites: None

Weighted Grade: No

NCAA: Yes

CTE Course: No

State Code: 06101A000

Students will learn the Spanish language, which includes learning basic vocabulary, beginning grammar; verbs in the present, future, and past tenses; and listening skills in order to carry on conversation in Spanish. The class is conducted in the target language as much as possible.

MEETS GRADUATION REQUIREMENT

ELECTIVE

SPANISH II (1521)

Credits: 1

Prerequisites: Spanish I

Weighted Grade: No

NCAA: Yes

CTE Course: No

State Code: 06102A000

Students will build upon skills learned in Spanish I. Further vocabulary and verb tenses in the indicative and subjunctive moods are learned. More emphasis is placed on conversation and self-expression in the language while cultural insights into the Spanish-speaking countries are presented. At the completion of this course a student should be ready to begin in-depth study in the Spanish language.

MEETS GRADUATION REQUIREMENT

ELECTIVE

SPANISH III (1531)

Credits: 1

Prerequisites: Spanish II

Weighted Grade: No

NCAA: Yes

CTE Course: No

State Code: 06103A000

Students will engage all skills learned in Spanish I and II and begin with a grammar and vocabulary review. Then students begin to read classics in simple form and hear spoken Spanish on tapes; to write original sentences and dialogues; to learn more about Spanish culture and arts; and to converse intelligently in the language with good oral expression.

MEETS GRADUATION REQUIREMENT

ELECTIVE

SPANISH IV (1541)

Credits: 1

Prerequisites: Spanish III

Weighted Grade: No

NCAA: Yes

CTE Course: No

State Code: 06104A000

Students will continue the skills learned in the first three years of language study. Conversational skills are emphasized, and in-depth study of Spain and/or Latin American culture is provided. In addition, individualized projects are undertaken throughout the year.

MEETS GRADUATION REQUIREMENT

ELECTIVE

HEALTH, PE, DRIVER'S ED COURSES

The ability to maintain individual health and wellness are critical life skills. It is important to understand how to balance proper nutrition and exercise as well as make lifelong healthy choices. Physical education provides cognitive content and instruction designed to develop motor skills, knowledge, and behaviors for physical activity and physical fitness for both athletes and non-athletes. Additionally, we embed Driver's Education for qualified students in order for them to fulfill the classroom and behind the wheel time needed to procure their driver's license.

DRIVER'S EDUCATION (1329)

Credits: .5

Prerequisites: Students must be 15 during their enrollment in the classroom portion AND passed eight academic classes in the prior two semesters (may include junior high)

Weighted Grade: No

NCAA: No

CTE Course: No

State Code: 08152A000

Driver's Education is a course designed to instruct age appropriate and qualified students in the basic principles of operating a class A vehicle in the state of Illinois. The course of instruction consists of 30 clock hours of classroom instruction and a minimum of six clock hours of behind-the-wheel instruction and six hours of behind-the-wheel observation. The Rules of the Road manual, issued by the State, and the principles of vehicle safety are thoroughly examined to assure students understand all relevant statutes for driving an automobile. Students will be scheduled for behind-the-wheel the semester after they have successfully completed the classroom instruction.

MEETS GRADUATION REQUIREMENT

ELECTIVE

HEALTH AND WELLNESS (1620)

Credits: 1

Prerequisites: None

Weighted Grade: No

NCAA: No

CTE Course: No

State Code: 08052A000

Health education will allow students to use high level thinking in order to make informed health decisions. Student centered discussion will be applied to topics including: Human growth, healthy eating, mental health, alcohol and substance abuse, human sexuality, prevention of sexually transmitted diseases, sexual abuse and assault prevention, CPR and AED training, and community health and safety. Wellness provides instruction and assessment in body fitness, including calisthenic exercises, and the fundamental skills, performance, and management of athletic games.

MEETS GRADUATION REQUIREMENT

ELECTIVE

**MEDICAL TERMINOLOGY
(1650)**

Credits: 1
(ICC Credit - HLTH 121)
Prerequisites: Junior Standing
Weighted Grade: Yes
NCAA: No
CTE Course: Yes
State Code: 14154A001
*Includes Dual Credit Fees

This course is the study of terminology used in all areas of medical and paramedical specialties. Emphasis is placed on word-building techniques and understanding of typical medical reports.

MEETS GRADUATION REQUIREMENT **ELECTIVE**

**PHYSICAL EDUCATION
(2110)**

Credits: 1
Prerequisites: None
Weighted Grade: No
NCAA: No
CTE Course: No
State Code: 0801A000

Physical Education provides instruction and assessment in body fitness, including calisthenic exercises, and the fundamental skills, performance, and management of athletic games. Classes will include concepts and practicum work in strength and conditioning, lifestyle management, yoga/mindfulness, foundations of fitness, leadership opportunities, and health-enhancing subject areas.

MEETS GRADUATION REQUIREMENT **ELECTIVE**

WEIGHT TRAINING (2115)

Credits: 1
(ICC Credit - PHYED 149)
Prerequisites: Junior Standing
Weighted Grade: No
NCAA: No
CTE Course: No
State Code: 08009A000
*Includes Dual Credit Fees

This course emphasizes concepts and application of Nautilus, or a similar type of equipment, and/or free weights to promote strength and physical fitness.

MEETS GRADUATION REQUIREMENT **ELECTIVE**

**ADVANCED WEIGHT
TRAINING (2116)**

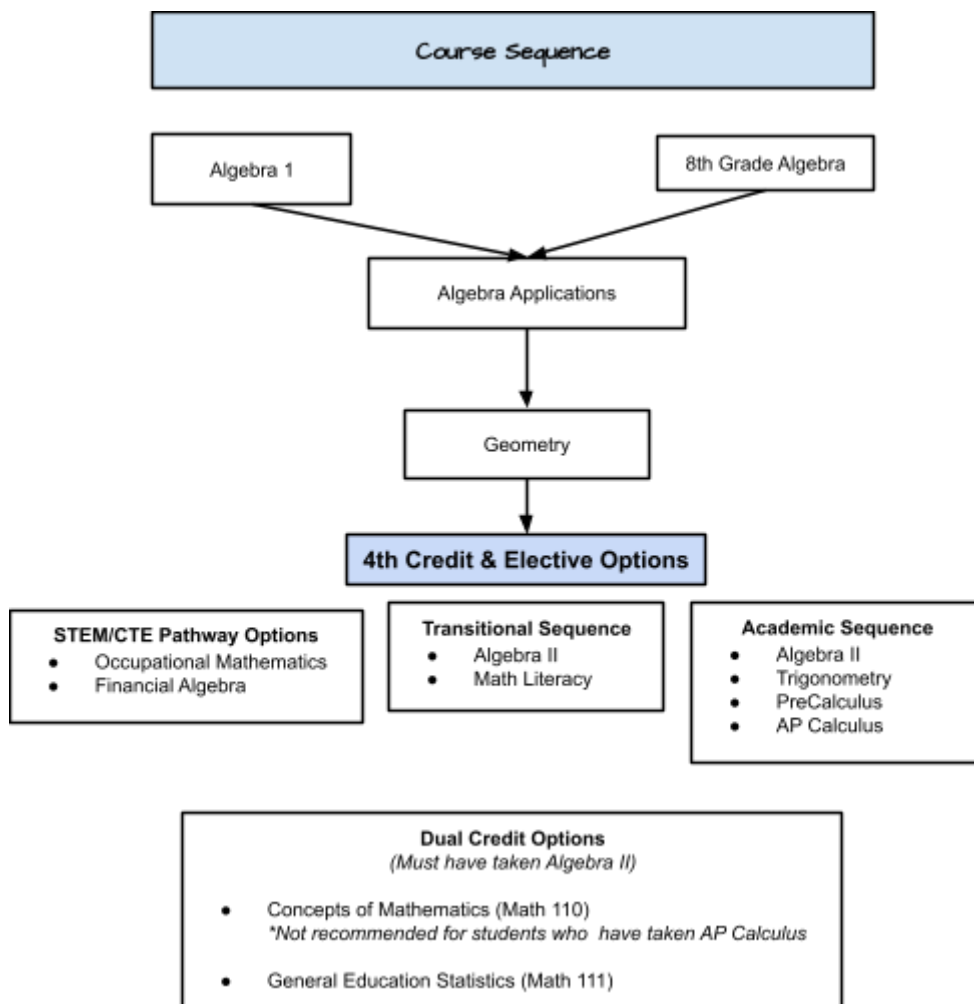
Credits: 1
(ICC Credit - PHYED 162)
Prerequisites: Weight Training I
Weighted Grade: No
NCAA: No
CTE Course: No
State Code: 08009A000
*Includes Dual Credit Fees

This course re-emphasizes concepts and application of Weight Training I and advances students in the areas of Nautilus, or a similar type of equipment, and/or free weights to promote strength and physical fitness.

MEETS GRADUATION REQUIREMENT **ELECTIVE**

MATHEMATICS COURSES

In a technological society there is a reliance on mathematical competence and understanding to process quantitative information, to solve problems creatively and resourcefully, and to use technology appropriately. Students have different abilities, needs, and interests; yet each student needs to be able to use mathematics in his or her personal life, in the workplace, and in further study. The Mathematics Department offers a variety of courses designed to provide students with a coherent and challenging curriculum using instructional strategies that promote engaged student learning and appropriate use of technology. To ensure proper placement in future coursework, math teachers make individual recommendations for all students each year



ALGEBRA I (1902)

Credits: 1

Prerequisites: None

Weighted Grade: No

NCAA: Yes

CTE Course: No

State Code: 02053A000

Students will study properties of rational numbers (i.e., number theory), ratio, proportion, and estimation, exponents and radicals, the rectangular coordinate system, sets and logic, formulas, and solving first degree equations and inequalities

MEETS GRADUATION REQUIREMENT

ELECTIVE

ALGEBRA APPLICATIONS (1943)

Credits: 1

Prerequisites: Successful Completion of 8th grade Algebra, Algebra I, or Teacher Recommendation

Weighted Grade: No

NCAA: Yes

CTE Course: No

State Code: 02052A000

Algebra Applications is for students who successfully completed Algebra in eighth grade and those who have completed Algebra I. It is the second part in the Algebraic sequence. This course will take a deeper dive into applying algebraic concepts including the study of properties of the real number system and operations, evaluating rational algebraic expressions, solving and graphing first degree equations and inequalities, translating word problems into equations, operations with and factoring of polynomials, and solving simple quadratics.

MEETS GRADUATION REQUIREMENT

ELECTIVE

GEOMETRY (1913)

Credits: 1

Prerequisites: Algebra Applications

Weighted Grade: No

NCAA: Yes

CTE Course: No

State Code: 02072A000

Geometry is the study of Euclidean geometry. Properties and relationships of and between figures are stressed. Inductive reasoning, deductive reasoning, and formal proof writing are introduced.

MEETS GRADUATION REQUIREMENT

ELECTIVE

FINANCIAL ALGEBRA (1950)

Credits: 1

Prerequisites: Geometry

Weighted Grade: No

NCAA: Yes

CTE Course: No

State Code: 02154A001

Financial Algebra provides students with mathematical competencies in business applications. The course addresses multiple topics as applied to business problems and situations. Students explore financial situations through symbolic, graphical, geometric, and verbal representations. Applications include wages, payroll deductions, sales, margins, accounts payable and receivable, financial reports, discounts, interest, business/debt analysis and decision making. This course is designed for students looking to go straight to career or to a trade school.

*offered on odd years

	MEETS GRADUATION REQUIREMENT	ELECTIVE
<p>OCCUPATIONAL MATHEMATICS (1951) <i>Credits:</i> 1 <i>Prerequisites:</i> Geometry <i>Weighted Grade:</i> No <i>NCAA:</i> No <i>CTE Course:</i> No <i>State Code:</i> 02152A000 *offered on even years</p>	<p>This course reinforces general math skills and extends these skills to include some algebraic topics, and use these skills primarily in occupational applications. Topics include rational numbers, measurement, basic statistics, ratio and proportion, basic geometry, formulas, and simple equations. This course is designed for students looking to go straight to career or to a trade school.</p>	
	MEETS GRADUATION REQUIREMENT	ELECTIVE
<p>ALGEBRA II (1920) <i>Credits:</i> 1 <i>Prerequisites:</i> Geometry <i>Weighted Grade:</i> No <i>NCAA:</i> Yes <i>CTE Course:</i> No <i>State Code:</i> 02056A000</p>	<p>Algebra II is an advanced study of linear functions and relations, inequalities, polynomials, and rational expressions. An introduction to three dimensional coordinate systems, conic sections, and probability are presented.</p>	
	MEETS GRADUATION REQUIREMENT	ELECTIVE
<p>TRIGONOMETRY (1923) <i>Credits:</i> 1 <i>Prerequisites:</i> Algebra II <i>Weighted Grade:</i> No <i>NCAA:</i> No <i>CTE Course:</i> No <i>State Code:</i> 02103A000</p>	<p>Trigonometry is an in-depth study of the properties of triangles, right trigonometric, and circular functions, and their relations, inverses and graphs; trigonometric identities and equations; solutions of right and oblique triangles; vectors; the polar coordinate system. This includes solving trigonometric equations, the Law of Cosines, and the Law of Sines. Real world and career applications of trigonometric topics are explored.</p>	
	MEETS GRADUATION REQUIREMENT	ELECTIVE
<p>MATHEMATICAL LITERACY (1926) <i>Credits:</i> 1 (ICC Transition Course) <i>Prerequisites:</i> Algebra II <i>Weighted Grade:</i> No <i>NCAA:</i> No <i>CTE Course:</i> No <i>State Code:</i> 02069A000</p>	<p>This is a transitional math course designed to move students into a transferable college credit bearing math class. The Syllabus mirrors ICC Math 095 which is a non-credit bearing college course. Math Literacy is specifically designed for future non-math and non science majors integrating numeracy, proportional reasoning, algebraic reasoning, and functions. Students will develop conceptual and procedural tools that support the use of key mathematical concepts in a variety of contexts. Throughout the course, college success content will be integrated with mathematical topics. Students completing the course with a grade of</p>	

70% or above may then enroll in MATH 110 or MATH 111.

MEETS GRADUATION REQUIREMENT **ELECTIVE**

PRE-CALCULUS (1930)

Credits: 1
Prerequisites: Trigonometry
Weighted Grade: Yes
NCAA: Yes
CTE Course: No
State Code: 02110A000

Pre-Calculus is a study of complex numbers; polynomial, logarithmic, exponential, rational, conic sections; Boolean algebra and symbolic logic; mathematical induction; matrix algebra; sequences and series; and limits and continuity. Students develop skills to help prepare them to take the AP Calculus AB test.

MEETS GRADUATION REQUIREMENT **ELECTIVE**

AP CALCULUS AB (1940)

Credits: 1
Prerequisites: Pre-Calculus
Weighted Grade: Yes
NCAA: Yes
CTE Course: No
State Code: 02124A000

AP Calculus AB is designed to develop the understanding of the concepts of calculus and provide experience with its methods and applications. The course represents a multi-representational approach to calculus, with concepts, results and problems expressed geometrically, numerically, analytically and verbally. The connections among these representations are important. Through the use of unifying themes of derivatives, integrals, limits, and applications and modeling, the course becomes a cohesive whole rather than a collection of unrelated topics. Students develop skills to prepare them to perform successfully on the AP Calculus AB test and gain a solid foundation to help them succeed in future mathematics courses. All students are encouraged to take the AP exam.

MEETS GRADUATION REQUIREMENT **ELECTIVE**

CONCEPTS OF MATHEMATICS (1934)

Credits: 1
(ICC Credit - MATH 110)
Prerequisites: Algebra II; Junior Standing; Approved Accuplacer or SAT reading placement score
Weighted Grade: Yes
NCAA: No
CTE Course: No
State Code: 02138A000
*Includes Dual Credit Fees

This course focuses on appreciation of mathematical reasoning, including the solving of real-life problems, rather than focusing on routine skills. Three topics that will be studied in depth will include counting techniques and probability, the mathematics of finance, and graph theory. Instructors will also choose at least one of the following topics to cover: geometry, logic and set theory, or statistics.

MEETS GRADUATION REQUIREMENT **ELECTIVE**

**GENERAL EDUCATION
STATISTICS (1936)**

Credits: 1

(ICC Credit - MATH 111)

Prerequisites: Algebra II;
Junior Standing; Approved
Accuplacer or SAT reading
placement score

Weighted Grade: Yes

NCAA: Yes

CTE Course: No

State Code: 02205A000

This course includes a study of frequency distribution, graphs (histograms, pie charts, etc.), measures of location (mean, median, mode, and percentile), measures of dispersion (variance, standard deviation), probability, estimating and predicting, normal distribution, binomial distribution, and correlation. This course will emphasize the quantitative portion of descriptive statistics -- gathering, analyzing, presenting and interpreting data.

MEETS GRADUATION REQUIREMENT

ELECTIVE

MUSIC COURSES

The Music Department at Fieldcrest offers coursework in the music and theater area. These courses can satisfy the Fine Arts requirement or work toward elective credits. It gives students the opportunities to perform in a wide variety of settings and the study of different styles of music and performing arts.

VOCAL MUSIC (2010)

Credits: 1

**Note:* Must be taken for whole year; meets 42 minutes/day

Prerequisites: None

Weighted Grade: No

NCAA: No

CTE Course: No

State Code: 05110A000

Students will learn the basics of 4 part singing and sight reading. Multiple outside performances such as seasonal concerts and school events exist, and attendance at those performances is mandatory. Opportunities for participation in IMEA at the District and State Levels and IHSA Solo and Ensemble Contest are offered. Grades will be determined by participation, performance, and attendance.

MEETS GRADUATION REQUIREMENT

ELECTIVE

BAND (2011)

Credits: 1

**Note:* Must be taken for whole year; meets 42 minutes/day

Prerequisites: None

Weighted Grade: No

NCAA: No

CTE Course: No

State Code: 05101A000

The instrumental program stresses the beauty of music through performances in marching, concert, and jazz settings. Students attend a summer band camp, compete in IHSA and several marching competitions, and perform at several school events and concerts. Attendance at those events is mandatory. Opportunities for participation in IMEA at the District and State Levels and IHSA Solo and Ensemble Contest are offered. Grades are based on participation, performance, and attendance.

MEETS GRADUATION REQUIREMENT

ELECTIVE

INTRODUCTION TO AMERICAN MUSIC (2021)

Credits: 1

(ICC Credit - MUS 148)

Prerequisites: None

Weighted Grade: Yes

NCAA: No

CTE Course: No

State Code: 05117A000

**Includes Dual Credit Fees*

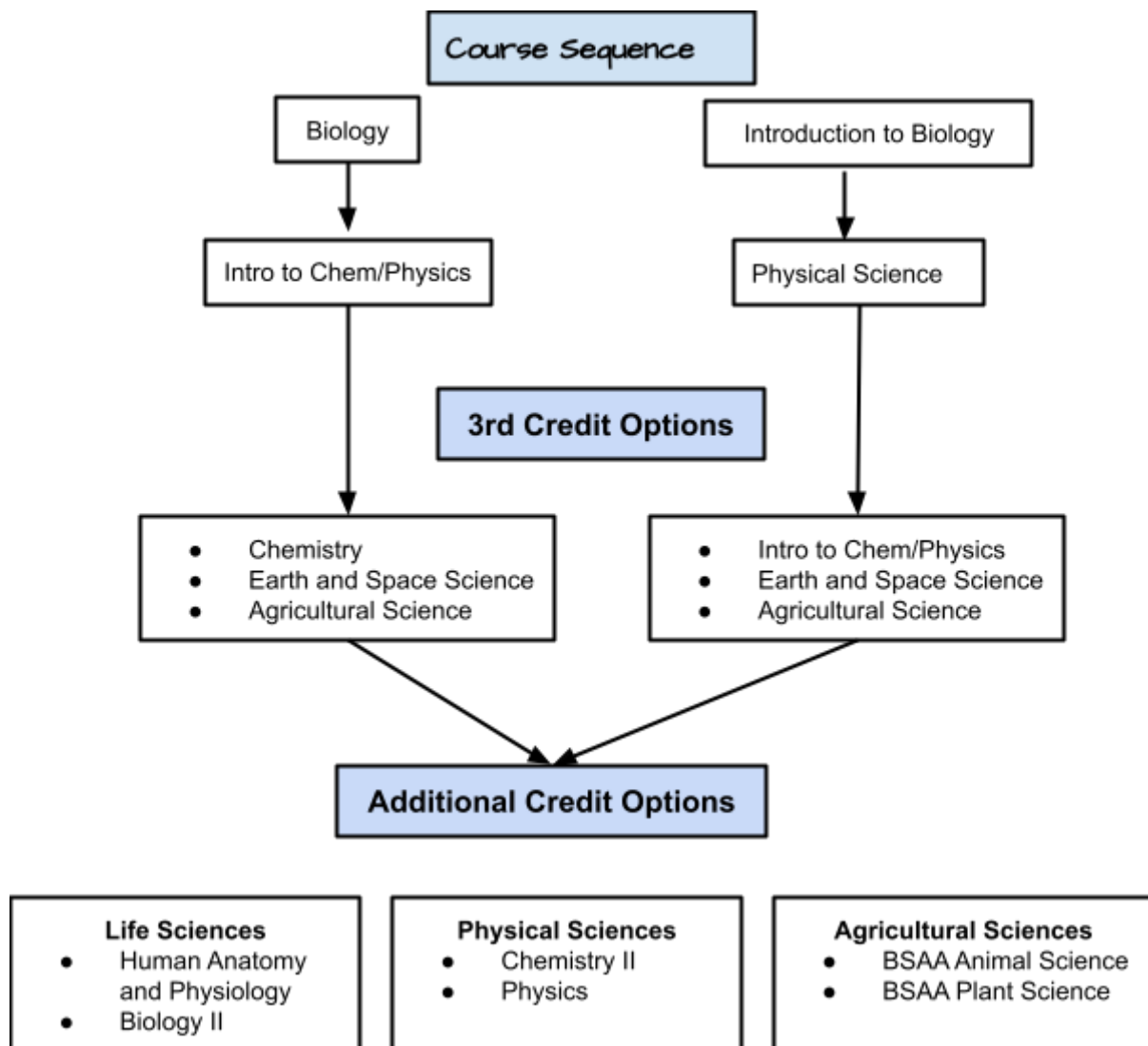
This course is a study of the musical heritages as they combined in the United States to create jazz. From the earliest performances to its present day pre-eminence in the musical world, this course covers formative influences such as religious music and spirituals; solo piano styles such as ragtime, boogie, and stride; blues history, work songs, and field hollers. It culminates in a detailed exploration of the various style periods in jazz, placing each movement in its historical and sociological context, including jazz as practiced today.

MEETS GRADUATION REQUIREMENT

ELECTIVE

SCIENCE and AGRICULTURE COURSES

Courses in science and agriculture at Fieldcrest are designed to give students a broad, yet in-depth background in all core areas of science and agriculture. Students must attain 3 science credits to graduate from Fieldcrest High School. The agriculture program is designed to help students develop an understanding of the agriculture industry. It includes overview and specialized coursework as well as workplace experiences. Course work is available for students entering the job market after graduation, attending a 2-year college or technical school, and for students who plan on attending a 4-year college or university.



AGRICULTURAL SCIENCE COURSES

INTRODUCTION TO THE AGRICULTURE INDUSTRY (1010)

Credits: 1

Prerequisites: None

Weighted Grade: No

NCAA: No

CTE Course: Yes

State Code: 18001A001

Introduction to the Agriculture Industry offers students an opportunity to learn about the many facets of American agriculture. Designed as a discovery course for inexperienced students, this class does not go into great detail on one subject, but covers many of the major segments within the broad category of agriculture. Among the many topics to be covered in this class are agronomy, horticulture, economics, record keeping, animal science, physical sciences, and technology. Students will get the opportunity to determine their specific interests in agriculture so they may expand on them as they continue through their education. Students can also establish a Supervised Agricultural Experience program and participate in agricultural science activities of the FFA.

MEETS GRADUATION REQUIREMENT

ELECTIVE

AGRICULTURAL SCIENCE (1020)

Credits: 1

Prerequisites: Biology

Weighted Grade: No

NCAA: No

CTE Course: Yes

State Code: 18003A001

Major units of instruction include agricultural research, soil science, advanced plant science, biotechnology, food science and environmental science. Applied science and math skills and concepts will be stressed throughout the course as they relate to each area. Improving computer and workplace skills will be a focus. Students can also establish a Supervised Agricultural Experience program and participate in agricultural science activities of the FFA. This class satisfies one credit of the graduation requirements in science.

MEETS GRADUATION REQUIREMENT

ELECTIVE

ADVANCED BIOLOGICAL SCIENCE APPLICATION IN AGRICULTURE (BSAA) - ANIMALS (1030)

Credits: 1

Prerequisites: Biology, Intro to Chemistry/Physics, and 1 credit in Agriculture

Weighted Grade: No

NCAA: No

CTE Course: Yes

State Code: 03064A002

Biological Science Applications in Agriculture – Animal Science is a course designed to reinforce and extend students’ understanding of science by associating scientific principles and concepts with relevant applications in agriculture. Students will examine major phases of animal agriculture and the specific biological science concept that govern management decisions in the animal industry.

MEETS GRADUATION REQUIREMENT

ELECTIVE

ADVANCED BIOLOGICAL SCIENCE APPLICATIONS IN AGRICULTURE (BSAA) - PLANTS (1031)

Credits: 1

Prerequisites: Biology, Intro to Chemistry/Physics, and 1 credit in Agriculture

Weighted Grade: No

NCAA: No

CTE Course: Yes

State Code: 03064A003

Biological Science Applications in Agriculture – Plant Science and Botany is a course designed to reinforce and extend students’ understanding of science by associating basic scientific principles and concepts with relevant applications in agriculture. Students will examine major phases of plant growth and management in agriculture and the specific biological science concepts that govern management decisions.

MEETS GRADUATION REQUIREMENT

ELECTIVE

AGRIBUSINESS & MANAGEMENT (1040)

Credits: 1

Prerequisites: Two credits in Ag; Junior Standing

Weighted Grade: No

NCAA: No

CTE Course: Yes

State Code: 18201A001

This course will develop students' understanding of the agricultural industry relating to the United States and World marketplace. Instructional units include: business ownership types, planning and organizing the agribusiness, financing, keeping and using records, operating the agribusiness, and developing employability skills.

MEETS GRADUATION REQUIREMENT

ELECTIVE

AGRICULTURAL MECHANICS & CONSTRUCTION (1024)

Credits: 1

Prerequisites: Sophomore Standing

Weighted Grade: No

NCAA: No

CTE Course: Yes

State Code: 18403A001

*Includes a Lab Fee

In this course, theory and hands-on experiences provide opportunities for students to develop basic knowledge and skills in agricultural mechanics, metalwork, and construction. Instructional areas include the basic fundamentals of maintaining and repairing small gasoline engines, welding, construction, cold metal work, personal safety, hand tools, power tools, blueprint reading, and construction skills in carpentry, plumbing, electricity, drywall, painting, and operating agricultural equipment safely.

MEETS GRADUATION REQUIREMENT

ELECTIVE

**SUPERVISED
AGRICULTURAL
EXPERIENCE I (1051)**

Credits: 1
Prerequisites: Students must be enrolled in an approved agricultural program sequence
Weighted Grade: No
NCAA: No
CTE Course: Yes
State Code: 18999A001

This program is designed for first time agriculture students. Students will select a minimum of one approved project. Supervised study, a project record book, training plans and agreements, report writing, and instructor project visitation and supervision are essentials of this experience.

MEETS GRADUATION REQUIREMENT **ELECTIVE**

**SUPERVISED
AGRICULTURAL
EXPERIENCE 2 (1052)**

Credits: 1
Prerequisites: Supervised Agricultural Experience 1;
Weighted Grade: No
NCAA: No
CTE Course: Yes
State Code: 18999A001

This program is designed for students between the tenth and eleventh grades. Students will be required to maintain an established agricultural experience program. Instructor project visitation and supervision are essentials of this experience.

MEETS GRADUATION REQUIREMENT **ELECTIVE**

**SUPERVISED
AGRICULTURAL
EXPERIENCE 3 (1053)**

Credits: 1
Prerequisites: Supervised Agricultural Experience 2;
Weighted Grade: No
NCAA: No
CTE Course: Yes
State Code: 18999A001

This program is for students between the eleventh and twelfth grades. Students will be provided with opportunities and responsibilities similar to those described under Supervised Occupational Experience I and II, with the exception that it is conducted at a more advanced level. Instructor visitation and supervision are continued at this stage.

MEETS GRADUATION REQUIREMENT **ELECTIVE**

SCIENCE COURSES

INTRODUCTION TO BIOLOGY (2310)

Credits: 1

Prerequisites: Teacher Recommendation

Weighted Grade: No

NCAA: No

CTE Course: No

State Code: 03062A000

Introduction to Biology is the entry-level science course for freshmen needing additional support in reading and/or math. This course includes both lecture and laboratory work, and covers such topics as laboratory use and safety, scientific method, general biology, and biodiversity, taxonomy, ecology, environmental issues, and conservation.

MEETS GRADUATION REQUIREMENT

ELECTIVE

BIOLOGY (2321)

Credits: 1

Prerequisites: None

Weighted Grade: No

NCAA: Yes

CTE Course: No

State Code: 03051A000

Biology is a problem solving and laboratory-oriented course. This course is to be a precursor to BSAA Plant and Animal Sciences (Botany/Zoology), Human Anatomy & Physiology and Biology II. Topics to be studied include Nature of Science, Ecology, Evolution, & Genetics.

MEETS GRADUATION REQUIREMENT

ELECTIVE

BIOLOGY II (2340)

Credits: 1

Prerequisites: Biology; Chemistry I

Weighted Grade: No

NCAA: Yes

CTE Course: No

State Code: 03052A000

This course is designed for the student wishing to extend their biology studies, and it covers biological systems in more detail. Topics that may be explored include cell organization, function, and reproduction; energy transformation; human anatomy and physiology; the evolution and adaptation of organisms; and genetics. This is a very fast paced course that will require a good deal of outside work.

MEETS GRADUATION REQUIREMENT

ELECTIVE

HUMAN ANATOMY AND PHYSIOLOGY (2332)

Credits: 1

Prerequisites: Biology, enrollment in or completion of Chemistry I

Weighted Grade: Yes

NCAA: Yes

CTE Course: No

State Code: 03053A000

The course is taught at an accelerated pace and at an advanced level. This is a problem solving course on the structure and function of the human body. Topics covered include: the language of anatomy, cells, tissues, and the body systems (skeletal, muscular, digestive, respiratory, excretory, circulatory, lymphatic, nervous, and reproductive). This course includes dissection labs.

MEETS GRADUATION REQUIREMENT

ELECTIVE

**PHYSICAL SCIENCE
(2320)**

Credits: 1
Prerequisites: Intro to
Biology
Weighted Grade: No
NCAA: Yes
CTE Course: No
State Code: 03159A000

Physical Science is a course for those students needing extra support in reading and/or math. Students will study the fundamentals of chemistry, physics and earth science to help fulfill a science requirement for high school graduation as well as to prepare them for Introduction to Chemistry. This course is a lecture and laboratory-oriented course with emphasis on laboratory skills and data collection. Topics to be studied include chemical and physical properties of elements and compounds, atomic theory, writing the names of elements and compounds, chemical bonding, periodic properties, as well as writing and balancing equations. Students will also explore basic mechanics and wave theory. Additional topics include plate tectonics, astronomy, mineralogy, and meteorology.

MEETS GRADUATION REQUIREMENT

ELECTIVE

**INTRODUCTION TO
CHEMISTRY/PHYSICS
(2342)**

Credits: 1
Prerequisites: Biology
Weighted Grade: No
NCAA: Yes
CTE Course: No
State Code: 03211A000

Introduction to Chemistry/Physics is a lecture and laboratory-oriented course. Students will be introduced to the scientific method, error analysis, measurements skills, dimensional analysis and scientific notation. Topics will include: atomic theory, the laws of conservation, writing chemical formulas, and investigation of chemical reactions. Students will also explore velocity, acceleration, force, laws of conservation, heat, gas laws, mechanical waves, sound, light, and electricity.

MEETS GRADUATION REQUIREMENT

ELECTIVE

CHEMISTRY I (2322)

Credits: 1
Prerequisites: Intro to
Chem/Physics; Algebra II
recommended
Weighted Grade: No
NCAA: Yes
CTE Course: No
State Code: 03101A000

Chemistry I is a lecture and laboratory oriented course with emphasis on lab safety and lab skills. The Scientific Method will be followed and measurement skills will be enhanced. Topics to be studied include atomic theory, orbital theory, mole calculations, periodic law, chemical bonding, chemical formulas and compounds, chemical equations, chemical reactions, stoichiometry, and the gas laws. Scientific notation, dimensional analysis, significant figures and error analysis will be required.

MEETS GRADUATION REQUIREMENT

ELECTIVE

CHEMISTRY II (2333)

This course is designed for juniors and seniors with

Credits: 1
Prerequisites: Chemistry I
Weighted Grade: Yes
NCAA: Yes
CTE Course: No
State Code: 03102A000

strong math and science skills. This is a weighted, lecture and laboratory oriented course. Due to the elevated level of the course, much emphasis will be placed on inquiry based laboratory work, the analysis of data and complex ideas. Students also need good language arts skills, as written laboratory reports are required. One quarter of the course will be devoted to completing a research project, including a completion of a technical research paper. Topics to be studied include liquids, solids, solutions, ions in aqueous solutions, acid/base chemistry, thermochemistry, chemical equilibrium, oxidation-reduction reactions, organic chemistry, as well as nuclear chemistry.

MEETS GRADUATION REQUIREMENT **ELECTIVE**

**EARTH & SPACE
SCIENCE (2341)**

Credits: 1
Prerequisites: Physical
Science or Intro to
Chem/Physics
Weighted Grade: No
NCAA: No
CTE Course: No
State Code: 03008A000

Earth and Space Science is a lab and lecture-oriented class. The scientific method and measurement skills will be reinforced in the course. During this course, students will study the fundamentals of earth science. Topics of study include: plate tectonics, geology, astronomy, meteorology, and oceanography. Advanced topics often include the study of the use of remote sensing, computer visualization, and computer modeling to enable earth scientists to understand earth as a complex and changing planet.

MEETS GRADUATION REQUIREMENT **ELECTIVE**

PHYSICS (2344)

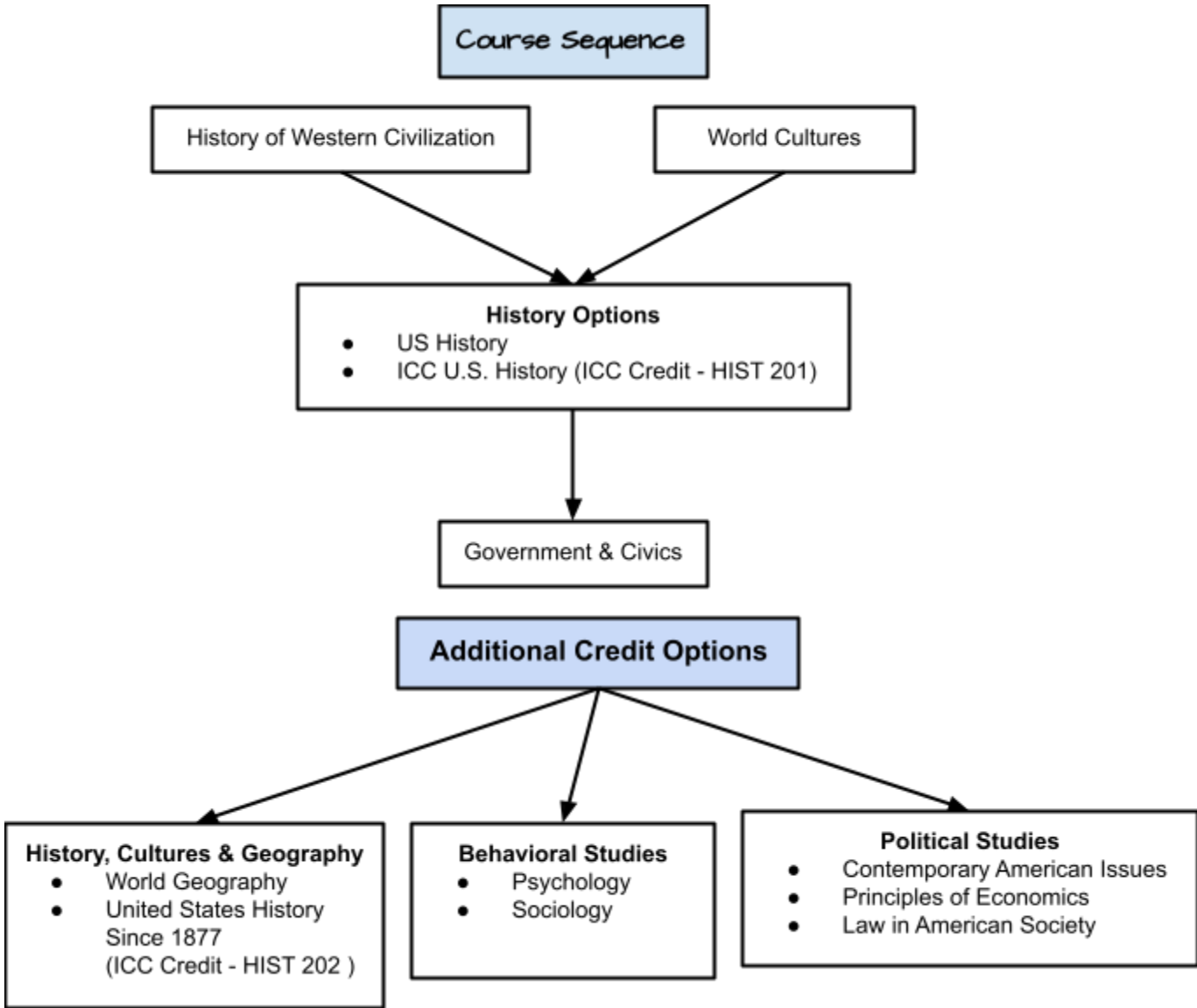
Credits: 1
Prerequisites: Chemistry I;
Enrollment or completion
of Pre-Calculus; Calculus
highly recommended
Weighted Grade: Yes
NCAA: Yes
CTE Course: No
State Code: 03151A000

Physics is a lecture and laboratory-oriented course that requires good mathematical and language arts skills as well as mental maturity to handle complex ideas. It is concerned with energy and its conversions. It also entails the study of dimensional analysis, error analysis, equation derivation, and detailed analysis of data. Students are required to write lab reports and often work independently under instructor guidance. Topics include mechanics, the laws of conservation of energy and momentum along with wave theory and nuclear physics. Attention will be given to Einstein's theory of relativity. Engineering concepts and principles learned will be applied by constructing a bridge.

MEETS GRADUATION REQUIREMENT **ELECTIVE**

SOCIAL STUDIES COURSES

The Social Studies Department offers a broad variety of courses attempting to touch on all of the disciplines of the social sciences. Three credits are needed for graduation from Fieldcrest High School; students planning on attending college are especially encouraged to take a minimum of four credits.



HISTORY OF WESTERN CIVILIZATION (2410)

Credits: 1
Prerequisites: None
Weighted Grade: No
NCAA: Yes
CTE Course: No
State Code: 04063A000

Students will examine the ascent of human society starting with primitive cultures and progressing to modern Europe and the progression into Western culture. Of primary importance is student understanding of the principal economic and political systems that existed, the effects of those systems on their constituents, and the lasting effects of those systems on our world today.

MEETS GRADUATION REQUIREMENT ELECTIVE

WORLD CULTURES (2414)

Credits: 1
Prerequisites: Teacher Recommendation
Weighted Grade: No
NCAA: Yes
CTE Course: No
State Code: 04301A000

World Cultures is the entry-level course for freshmen needing additional support in reading and/or writing. Students will survey the various cultures of the world with an emphasis on the effects of history and geography on individual cultures, as well as the impact of those cultures on the world as a whole. After an introductory unit on geography and thinking like an historian, students will begin with studying the Americas, then Europe, Asia, Africa, and the Pacific.

MEETS GRADUATION REQUIREMENT ELECTIVE

GOVERNMENT & CIVICS (2420)

Credits: 1
Prerequisites: US History or ICC US History
Weighted Grade: No
NCAA: Yes
CTE Course: No
State Code: 04151A000

Students will study the development, workings, and intricacies of the American system of government. This will include early governmental forms and history of the colonial era through the ratification and implementation of the U.S. Constitution. Included in the course are exams covering the State and Federal Constitutions, the Declaration of Independence, and the Flag, which are required in order to get credit for the class, as well as for graduation and by the School Code of Illinois.

MEETS GRADUATION REQUIREMENT ELECTIVE

UNITED STATES HISTORY (2430)

Credits: 1
Prerequisites: Sophomore Standing
Weighted Grade: No
NCAA: Yes
CTE Course: No
State Code: 04101A000

Students will survey influential events and people, beginning with the Washington administration (after the implementation of the U.S. Constitution) and proceeding into the 21st century. Its intent is to interpret the evolution of American economic, political, and social systems, and cultural heritage.

MEETS GRADUATION REQUIREMENT ELECTIVE

**ICC UNITED STATES
HISTORY TO 1877 (2431)**

Credits: 1
(ICC Credit - HIST 201)
Prerequisites: Junior
Standing; Approved
Accuplacer or SAT reading
placement score
Weighted Grade: Yes
NCAA: Yes
CTE Course: No
State Code: 04102A000
*Includes Dual Credit Fees

Dual Credit U.S. History is a challenging course that is meant to be the equivalent of a freshman college course. This course traces the history of the United States from the pre-Columbian period through the Civil War and its aftermath. Solid reading and writing skills, along with a willingness to devote considerable time to homework and study, are necessary to succeed. Students taking this course are highly encouraged to also enroll in HIST 202 during the following semester.

MEETS GRADUATION REQUIREMENT ELECTIVE

**ICC UNITED STATES
HISTORY SINCE 1877
(2450)**

Credits: 1
(ICC Credit - HIST 202)
Prerequisites: Junior
standing; Approved
Accuplacer or SAT reading
placement score
Weighted Grade: Yes
NCAA: Yes
CTE Course: No
State Code: 04103A000
*Includes Dual Credit Fees

Dual Credit U.S. History is a challenging course that is meant to be the equivalent of a freshman college course. This course traces the history of the United States from the end of the Reconstruction to the present. Solid reading and writing skills, along with a willingness to devote considerable time to homework and study, are necessary to succeed.

MEETS GRADUATION REQUIREMENT ELECTIVE

**WORLD GEOGRAPHY
(2415)**

Credits: 1
Prerequisites: None
Weighted Grade: No
NCAA: Yes
CTE Course: No
State Code: 04001A000

After a brief introduction of human and physical geography, the class will examine a broad range of geographical perspectives. Students study several regions to analyze the similarities and differences between each region. You will understand the meaning of geography through in-depth exploration of North America, Central America, South America, Western Europe, South Asia (India), China, Japan, Korea, Southeast Asia, Russia, and The Middle East (Southwest Asia). The themes of geography (location, place, human-environmental interaction, movement, and region) will guide the exploration of each region.

MEETS GRADUATION REQUIREMENT ELECTIVE

**CONTEMPORARY
AMERICAN ISSUES (2421)**

Credits: 1

Prerequisites: Junior
Standing

Weighted Grade: No

NCAA: Yes

CTE Course: No

State Code: 04106A000

*offered on even years

Students will learn about the cultural issues, social movements, and societal changes that constitute American society, and challenge them through research to understand their development and form their own personal perspective. Students will discuss contemporary events facing Americans. The course is oriented toward debate, advocacy, interpretation, and a careful analysis of both sides of controversial issues, and the implications of such issues.

MEETS GRADUATION REQUIREMENT

ELECTIVE

PSYCHOLOGY (2432)

Credits: 1

Prerequisites: Junior
Standing

Weighted Grade: No

NCAA: Yes

CTE Course: No

State Code: 04254A000

This course is an introductory survey course designed to help the student understand many of the ways human beings act, think, and react to each other. Units include contemporary psychological perspectives, psychological research, biology and behavior, human growth and development, learning and mental wellness and illness.

MEETS GRADUATION REQUIREMENT

ELECTIVE

SOCIOLOGY (2441)

Credits: 1

Prerequisites: Junior
Standing

Weighted Grade: No

NCAA: Yes

CTE Course: No

State Code: 04258A000

Students will study the development, structure, interaction, and collective behavior of groups of human beings. The course involves the scientific analysis of social institutions, relationships within groups, and how they relate to society as a whole. Through discussions, lectures, and projects, topics may include sociological theories, relationship between rural and urban cultures, poverty, gender roles, demographic patterns and trends, and emerging controversies and conflicts in society.

MEETS GRADUATION REQUIREMENT

ELECTIVE

**HISTORY OF WOMEN'S
ACTIVISM (2451)**

Credits: 1

Prerequisites: Junior
Standing

Weighted Grade: No

NCAA: No

CTE Course: No

State Code: 04109A000

*offered on odd years

This course covers the struggles and triumphs of women's activism in United States history up to the present day. This course aims to elevate the role that women played in shaping key American moments and the overall American narrative. Women and organizations who will be covered include but are not limited to: 19th century & 20th suffragists and labor activists; civil rights activists Native American activists, Anti ERA activists, environmental activists and women of the Black Panthers, Supreme Court and March for Our Lives.

MEETS GRADUATION REQUIREMENT

ELECTIVE

PRINCIPLES OF ECONOMICS (2440)

Credits: 1

Prerequisites: Junior Standing

Weighted Grade: No

NCAA: Yes

CTE Course: No

State Code: 04201A000

This course provides a general background in economics, major economic theories and economists. Supply and demand in a market economy is studied. Students will explore the three main economic systems; Capitalism, Socialism and Communism. Through discussions, lectures, projects, and simulations, students will learn about producer consumer relationships, the role of government in economics, forecasting our economic future, and international economic issues. ***This course satisfies the Consumer Education requirement.***

MEETS GRADUATION REQUIREMENT

ELECTIVE

ICC INTRODUCTION TO PSYCHOLOGY (2445)

Credits: 1

(ICC Credit - PSY 110)

Prerequisites: Junior Standing; Approved Accuplacer or SAT reading placement score

Weighted Grade: Yes

NCAA: No

CTE Course: No

State Code: 04254A000

Psychology is the scientific study of behavior and mental processes. This course will introduce the student to fundamentals of physiological psychology, sensation and perception, learning, emotions and motivation, and psychological disorders and their treatment. The role of research and the scientific method are emphasized throughout the course.

(ONLINE ONLY)

MEETS GRADUATION REQUIREMENT

ELECTIVE

ICC INTRODUCTION TO SOCIOLOGY (2446)

Credits: 1

(ICC Credit - SOC 110)

Prerequisites: Junior Standing; Approved Accuplacer or SAT reading placement score

Weighted Grade: Yes

NCAA: No

CTE Course: No

State Code: 04258A000

This course utilizes the approaches of functionalism, conflict theory, and interactionism to analyze the structures and processes of group life from a scientific perspective. Major areas of inquiry include: theory and methodology, culture, social organizations, socialization, groups, institutions, formal organizations, collective behavior, and social change.

(ONLINE ONLY)

MEETS GRADUATION REQUIREMENT

ELECTIVE

SPECIAL EDUCATION COURSES

These programs are available only for students who are eligible for Special Education services, according to state criteria based on the individual program developed at an IEP conference.

<p>FOUNDATIONS OF ENGLISH I (1413) <i>Credits:</i> 1 <i>Prerequisites:</i> None <i>Weighted Grade:</i> No <i>NCAA:</i> No <i>CTE Course:</i> No <i>State Code:</i> 01001A000</p>	<p>This course builds upon students’ prior knowledge of grammar, vocabulary, word usage, and the mechanics of writing and usually include the four aspects of language use: reading, writing, speaking, and listening. Students will read and discuss various genres of literature with writing exercises often linked to reading selections.</p>	<p>MEETS GRADUATION REQUIREMENT ELECTIVE</p>
---	---	--

<p>FOUNDATIONS OF ENGLISH II (1480) <i>Credits:</i> 1 <i>Prerequisites:</i> Foundations of English I or English I <i>Weighted Grade:</i> No <i>NCAA:</i> No <i>CTE Course:</i> No <i>State Code:</i> 01002A000</p>	<p>This course offers a balanced focus on composition and literature. Students learn about the alternate aims and audiences of written compositions by writing persuasive, critical, and creative multi-paragraph essays and compositions. Students will read and discuss various genres of literature with writing exercises often linked to reading selections.</p>	<p>MEETS GRADUATION REQUIREMENT ELECTIVE</p>
---	---	--

<p>FOUNDATIONS OF ENGLISH III (1438) <i>Credits:</i> 1 <i>Prerequisites:</i> Foundations of English II or English II <i>Weighted Grade:</i> No <i>NCAA:</i> No <i>CTE Course:</i> No <i>State Code:</i> 01003A000</p>	<p>This course continues to develop students’ writing skills, emphasizing clear, logical writing patterns, word choice, and usage, as students write essays and begin to learn the techniques of writing research papers. Students continue to read works of literature, which often form the backbone of the writing assignments.</p>	<p>MEETS GRADUATION REQUIREMENT ELECTIVE</p>
--	--	--

<p>FOUNDATIONS OF ENGLISH IV (1442) <i>Credits:</i> 1 <i>Prerequisites:</i> Foundations of English III or English III <i>Weighted Grade:</i> No <i>NCAA:</i> No <i>CTE Course:</i> No <i>State Code:</i> 01004A000</p>	<p>This course blends composition and literature into a cohesive whole as students write critical and comparative analyses of selected literature, continuing to develop their language arts skills. Students primarily write multi-paragraph essays, but they may also write one or more major research papers.</p>	<p>MEETS GRADUATION REQUIREMENT ELECTIVE</p>
---	--	--

FOUNDATIONS OF ALGEBRA I (1944)

Credits: 1

Prerequisites: None

Weighted Grade: No

NCAA: No

CTE Course: No

State Code: 02053A000

This course increases students' foundational mathematics skills and provides Algebraic thinking by covering a variety of topics, such as properties of rational numbers (i.e., number theory), ratio, proportion, estimation, exponents and radicals, the rectangular coordinate system, sets and logic, formulas, and solving first-degree equations and inequalities.

MEETS GRADUATION REQUIREMENT

ELECTIVE

FOUNDATIONS OF GEOMETRY (1946)

Credits: 1

Prerequisites: Foundations of Advanced Algebra

Weighted Grade: No

NCAA: No

CTE Course: No

State Code: 02071A000

This course emphasizes a practical approach to the study of geometry. Topics typically include properties of and work with plane and solid figures; inductive methods of reasoning and use of logic; concepts of congruence, similarity, parallelism, perpendicularity, and proportion; and rules of angle measurement in triangles.

MEETS GRADUATION REQUIREMENT

ELECTIVE

FOUNDATIONS OF FINANCIAL ALGEBRA (2157)

Credits: 1

Prerequisites: Foundations of Geometry

Weighted Grade: No

NCAA: No

CTE Course: No

State Code: 02157A000

This course reinforces general math topics (such as arithmetic using rational numbers, measurement, ratio and proportion, and basic statistics) and applies these skills to consumer problems and situations.

Applications typically include budgeting, taxation, credit, banking services, insurance, buying and selling products and services, home and/or car ownership and rental, managing personal income, and investment.

MEETS GRADUATION REQUIREMENT

ELECTIVE

FOUNDATIONS OF TECHNICAL MATH (1947)

Credits: 1

Prerequisites: Foundations of Geometry

Weighted Grade: No

NCAA: No

CTE Course: No

State Code: 02153A001

Technical Math extends students' proficiency in mathematics, and apply these skills to technical and/or industrial situations and problems. Topics may include but are not limited to rational numbers, systems of measurements, numerical languages, geometry, algebra, and using tables, graphs, charts, and other data displays. Technology is integrated as appropriate.

MEETS GRADUATION REQUIREMENT

ELECTIVE

**FOUNDATIONS OF
INTRODUCTION TO
BIOLOGY
(2344)**

Credits: 1

Prerequisites: None

Weighted Grade: No

NCAA: No

CTE Course: No

State Code: 03062A000

This course provides students with a basic understanding of living things. Topics covered may include ecology and environmental problems such as overpopulation and pollution as well as cells, types of organisms, evolutionary behavior, and inheritance. It includes simple labs related to living systems.

MEETS GRADUATION REQUIREMENT

ELECTIVE

**FOUNDATIONS OF
PHYSICAL SCIENCE (2345)**

Credits: 1

Prerequisites: None

Weighted Grade: No

NCAA: No

CTE Course: No

State Code: 03159A000

Physical Science is a developmental level class that includes lab work. Topics covered include the scientific method, measurements, matter, motion, simple machines, atomic structure, periodic table, chemical reactions, force, work, energy, astronomy (universe), meteorology (weather and climate), plate tectonics, and mineralogy.

MEETS GRADUATION REQUIREMENT

ELECTIVE

**FOUNDATIONS OF
ENVIRONMENTAL SCIENCE
(2301)**

Credits: 1

Prerequisites: None

Weighted Grade: No

NCAA: No

CTE Course: No

State Code: 03003A000

Environmental Science is a developmental level class. Topics covered include: understanding the environment, making environmental decisions, biomes, ecosystems, water, air, land, food, biodiversity, energy, solid and hazardous waste, population growth, environmental policies, and environmental careers.

MEETS GRADUATION REQUIREMENT

ELECTIVE

**FOUNDATIONS OF
GOVERNMENT &
CIVICS(2442)**

Credits: 1

Prerequisites: Foundations of
US History

Weighted Grade: No

NCAA: No

CTE Course: No

State Code: 04151A000

This course provides an overview of the structure and functions of the U.S. government and political institutions, the concepts of rights and responsibilities, and the importance of civic participation in the democratic process. Emphasis will be on understanding the State and Federal Constitutions, the Declaration of Independence, and the history and treatment of the Flag.

MEETS GRADUATION REQUIREMENT

ELECTIVE

FOUNDATIONS OF US HISTORY (2443)

Credits: 1

Prerequisites: None

Weighted Grade: No

NCAA: No

CTE Course: No

State Code: 04101A000

This course provides students with an overview of the history of the United States, examining time periods from colonialism through World War II or after.

MEETS GRADUATION REQUIREMENT

ELECTIVE

FOUNDATIONS OF CONTEMPORARY AMERICAN ISSUES (2444)

Credits: 1

Prerequisites: Junior

Standing; Foundations of US History

Weighted Grade: No

NCAA: No

CTE Course: No

State Code: 04106A000

Students will learn about the cultural issues, social movements, and societal changes that constitute American society and discuss contemporary events facing Americans.

MEETS GRADUATION REQUIREMENT

ELECTIVE

FOUNDATIONS OF CONSUMER EDUCATION (2447)

Credits: 1

Prerequisites: None

Weighted Grade: No

NCAA: No

CTE Course: No

State Code: 22210A000

This course focuses on the understanding and skills needed to make responsible personal and financial decisions as adults in the home, community, and workplace. Topics include the following: life stages & styles, values, social concerns, dealing with stress, budgeting, taxes, banking, savings, credit, asset ownership, investments, transportation, housing, and insurance. The course also includes career research and the job search process. ***This course satisfies the Consumer Education requirement.***

MEETS GRADUATION REQUIREMENT

ELECTIVE

FOUNDATIONS OF HEALTH & WELLNESS(1621)

Credits: 1

Prerequisites: None

Weighted Grade: No

NCAA: No

CTE Course: No

State Code: 08052A000

Health education allows students to make informed health decisions. Topics include: healthy eating, mental health, alcohol and substance abuse, human sexuality, prevention of sexually transmitted diseases, sexual abuse and assault prevention, CPR and AED training, and community health and safety. Wellness provides instruction in body fitness, including calisthenic exercises, and the fundamental skills, performance, and management of athletic games.

MEETS GRADUATION REQUIREMENT

ELECTIVE

FOUNDATIONS OF SPANISH I (1551) Students will learn basic Spanish vocabulary in order to understand simple conversations in Spanish.
Credits: 1 **MEETS GRADUATION REQUIREMENT** ELECTIVE
Prerequisites: None
Weighted Grade: No
NCAA: No
CTE Course: No
State Code: 06108A000

FOUNDATIONS OF SPANISH II (1561) Students will build upon the basic Spanish vocabulary as well as learn beginning grammar; verbs in the present, future, and past tenses; and listening skills in order to carry on simple conversations in Spanish.
Credits: 1 **MEETS GRADUATION REQUIREMENT** ELECTIVE
Prerequisites: None
Weighted Grade: No
NCAA: No
CTE Course: 06108A000

COMMUNITY BASED INSTRUCTION (8500) This course provides a built-in linkage to DHS/DRS, an agency that can assist students with disabilities with their post-school employment and career development goals. The program provides work experiences that coincide with post-secondary employment goals that could include paid employment or internships.
Credits: 1 **MEETS GRADUATION REQUIREMENT** ELECTIVE
Prerequisites: None
Weighted Grade: No
NCAA: No
CTE Course: No
State Code: 22151A002

FOUNDATIONS OF CAREER EXPLORATIONS (22151) Career Exploration courses help students identify and evaluate personal goals, priorities, aptitudes, and interests with the goal of helping them make informed decisions about their careers. These courses expose students to various sources of information on career and training options and may also assist them in developing job search and employability skills.
Credits: 1 **MEETS GRADUATION REQUIREMENT** ELECTIVE
Prerequisites: None
Weighted Grade: No
NCAA: No
CTE Course: No
State Code: 22151A000

FOUNDATIONS OF EMPLOYABILITY SKILLS (22152) Employability Skills courses help students match their interests and aptitudes to career options with a focus on using employment information effectively, acquiring and improving job-seeking and interview skills, composing job applications and resumes, and learning the skills needed to remain in and advance within the workplace.
Credits: 1 **MEETS GRADUATION REQUIREMENT** ELECTIVE
Prerequisites: None
Weighted Grade: No
NCAA: No
CTE Course: No
State Code: 22152A000

VOCATIONAL COURSES

The Vocational Department offers a variety of courses focusing on skills needed for careers in the trades. Career and Technical Education (CTE) courses directly prepare students for the world of work by providing technical job specific skills for a wide range of high-skill, high-wage and high-demand careers. Students taking these courses may elect to enter the world of work or further their training after high school with trade schools or colleges.

INTRODUCTION TO TECHNOLOGY AND ENGINEERING (2611)

Credits: 1
Prerequisites: None
Weighted Grade: No
NCAA: No
CTE Course: Yes
State Code: 21052A002

This Introduction to Technology & Engineering course offers students an opportunity to learn about the many facets of manufacturing, welding, construction, energy utilization, and design. This course will cover general safety and career exploration. Additionally, students will learn about the resources, tools, and equipment they may encounter in manufacturing-related occupations and enable them to develop the skills they need to use these various processes and applications.

MEETS GRADUATION REQUIREMENT ELECTIVE

CONSTRUCTION TRADES I (2534)

Credits: 1
Prerequisites: Introduction to Technology & Engineering; Sophomore Status
Weighted Grade: No
NCAA: No
CTE Course: Yes
State Code: 17002A001

This course provides experiences related to the erection, installation, and maintenance of residential buildings and related fixtures. Planned learning activities allow students to understand fundamental principles and methods, and develop technical skills related to masonry, carpentry, and finish work.

MEETS GRADUATION REQUIREMENT ELECTIVE

*Includes a Lab Fee

CONSTRUCTION TRADES II (2604)

Credits: 1
Prerequisites: Construction Trades I
Weighted Grade: No
NCAA: No
CTE Course: Yes
State Code: 17002A002

This course builds on the foundations from Construction Trades I and provides further learning experiences related to the erection, installation, maintenance, and repair of building structures and related utilities. Student technical skill experiences include instruction and activities in safety principles and practices in plumbing, electricity, masonry, carpentry, and finish work. All learning experiences are designed to allow the student to acquire job-entry skills and knowledge.

MEETS GRADUATION REQUIREMENT ELECTIVE

**WELDING TECHNOLOGY I
(2602)**

Credits: 1

Prerequisites: Introduction to
Technology & Engineering;
Sophomore Status

Weighted Grade: No

NCAA: No

CTE Course: Yes

State Code: 13207A001

*Includes a Lab Fee

This course assists students in gaining the knowledge and developing the basic skills needed to be successful in welding technology. Units of instruction include arc, TIG and MIG welding, metallurgy, cutting metal using arc, plasma, and oxy-gas. In addition, students learn the basics of blueprint reading, precision measuring, layout, and production process planning.

MEETS GRADUATION REQUIREMENT

ELECTIVE

**WELDING TECHNOLOGY II
(2603)**

Credits: 1

Prerequisites: Welding
Technology I

Weighted Grade: No

NCAA: No

CTE Course: Yes

State Code: 13207A002

*Includes a Lab Fee

This course builds on the skills and concepts introduced in Welding Technology I and provides more in depth skill development in various types of welding including horizontal, vertical, overhead, and circular techniques. Students also explore the use of robotic and automated production welding.

MEETS GRADUATION REQUIREMENT

ELECTIVE

**MANUFACTURING &
CONSTRUCTION –
INDEPENDENT STUDY
(Needs #2610)**

Credits: 1

Prerequisites: Construction
Trades II or Welding
Technology II

Weighted Grade: No

NCAA: No

CTE Course: Yes

State Code: 63997A000

*Includes a Lab Fee

The student taking this course partners with the instructor to develop an individual plan of study in which they expand their expertise in Welding, Construction, and/or Manufacturing to explore a topic in greater detail, or to develop more advanced skills.

MEETS GRADUATION REQUIREMENT

ELECTIVE

Workplace Experience Courses

The CTE Workplace Experience coursework includes at least sixty hours of paid or unpaid work experience. This experience directly supports a student's individualized program of study after completing related coursework and is based on a set of goals developed by the student and the supervising educator-coordinator. In addition to the practicum, students will participate in a weekly, synchronous 30 minute meeting with the educator-coordinator and other workplace students. The students will earn one elective credit per semester and work and be paid or volunteer in line with federal, state, and local laws.

<i>Fieldcrest Workplace Experience Options</i>	<i>State Code</i>
Accounting Workplace Experience	12148A002
Agribusiness Workplace Experience	18248A001
Apparel and Textiles Workplace Experience	19248A001
Arts Workplace Experience	11998A002
Automotive Technician Workplace Experience	20148A002
Broadcast Technology Workplace Experience	11998A001
Building Maintenance Workplace Experience	17998A001
Business Management Workplace Experience	12098A001
Cabinetmaking Workplace Experience	13098A001
Computer Science Workplace Experience	10998A001
Early Childhood Education Workplace Experience	19198A002
Elder Care Workplace Experience	19098A001
Electricity/Electronics Workplace Experience	17148A001
EMT Workplace Experience	14148A003
General Construction Workplace Experience	17048A001
General Education Workplace Experience	19198A001
Government Service Workplace Experience	15248A001
Marketing Workplace Experience	12198A001
Nursing Assistant Workplace Experience	14098A005
Nutrition and Wellness Workplace Experience	19998A002
Pharmacy Technician Workplace Experience	14098A002
Restaurant, Food and Beverage Services Workplace Experience	16098A001
Welding Workplace Experience	13248A002

BLOOMINGTON AREA CAREER CENTER - OFF CAMPUS COURSES

Students wishing to attend Bloomington Area Career Center courses must complete an application and generally have at least 15 credits completed to be eligible for the program. These classes are full year classes, and Fieldcrest buses students to and from Bloomington. Students leave immediately after their lunch and return by 3:05 pm. Due to travel time, they take two classes in the morning so it is imperative they are on-track to graduate. In the case of days in which days off do not align between Fieldcrest and BACC, students are expected to attend the program that is still in session and transportation will still be provided to BACC.

AUTOMOTIVE TECHNOLOGY I (2535)

Credits: 2

Prerequisites: None

Weighted Grade: No

NCAA: No

CTE Course: Yes

State Code: 20104A001

This course is designed to prepare students for an entry level job or advanced training in the automotive service and diesel technology field. Students will develop skills in the design, theory, function, and diagnostic procedures of gasoline and diesel engines. In addition, all aspects of the vehicle will be covered, including safety, basic maintenance, braking systems, engine repair, suspension and steering, electrical/electronic, which include modern computer controls and emissions systems. Students will perform automotive service work with an emphasis on shop operating safety procedures.

MEETS GRADUATION REQUIREMENT

ELECTIVE

AUTOMOTIVE TECHNOLOGY II (2536)

Credits: 2

Prerequisites: Automotive Technology I

Weighted Grade: No

NCAA: No

CTE Course: Yes

State Code: 20104A002

Students will enhance the skills learned in Automotive Technology I as well as develop new skills. Students will learn to use advanced tools and equipment through hands-on experience with the latest technology in the automotive industry. Specific topics that will be covered in depth include safety, basic maintenance, braking systems, engine repair, suspension and steering, electrical/electronic, which include modern computer controls and emissions systems. The students will perform automotive service work with an emphasis on real world shop operating scenarios using teacher and community vehicles.

MEETS GRADUATION REQUIREMENT

ELECTIVE

BARBERING I (2590)

Credits: 2

Prerequisites: None

Weighted Grade: No

NCAA: No

CTE Course: Yes

State Code: 19102A001

There are tremendous opportunities for a great career in the barbering industry. As a barber you'll devote your talents to making others look and feel their best. You'll keep up with current trends through practice, instructor demonstrations, and working on mannequins. The barbering industry offers many options for personal growth and many career paths to choose from. Students attend Hairmasters which is a Pivot Point Legacy School. While attending, students demonstrate competencies in several of the classroom modules needed for the required Illinois State Board Exam. All students will focus on one module in the first year and another module in the second year. Classes will also attend the Midwest Beauty Show in Chicago, IL where they are able to network with over 50,000 barbering and cosmetology industry professionals *Module One* will consist of the basic skills in men's and women's haircutting and styling. Students will practice these skills until they have mastered them based upon industry standards.

MEETS GRADUATION REQUIREMENT

ELECTIVE

BARBERING II (2591)

Credits: 2

Prerequisites: Barbering I

Weighted Grade: No

NCAA: No

CTE Course: Yes

State Code: 19102A001

Module Two will consist of furthering skills in men's and women's haircutting and styling as well as adding skills in perming, relaxing, and coloring services. Students then practice these skills until they have mastered them based upon industry standards. All hours accumulated during the student's time at BACC Hairmasters Barbering are credited towards the completion of the 1,500 hour course and licensure *This program pathway may be completed at Hairmasters where they will prepare you to take the Illinois State mandated exam.*

MEETS GRADUATION REQUIREMENT

ELECTIVE

**COMPUTER TECHNOLOGY
and NETWORKING I (2537)**

Credits: 2

(Heartland Dual Credit -
Comp Sci 101, 4 credits
Networking 151, 3 credits,
Networking 160, 3 credits)

Prerequisites: None

Weighted Grade: No

NCAA: No

CTE Course: Yes

State Code: 10252A001

The Computer Maintenance Technology course is designed to equip both the novice and experienced students with entry-level computer technician proficiencies. Students will work closely with the instructor, an educational technology department, and local technology businesses to better their understanding of the material covered in class. The course will help students become adept with customer support techniques and key computer hardware architecture components, such as: the motherboard, processor, memory, drives, networks, power supplies, and peripheral devices for both desktop and laptop computers. Additionally, students will install, configure, and troubleshoot the significant operating systems utilized today. Significant lab time is provided to offer the student authentic hands-on experiences in working with computers. The goal is to prepare these students to take the Comptia A+ Certification (starting point for a career in IT), and have them available to assist schools' technology departments in a variety of manners. The class will also be working on basic networking knowledge and skills.

MEETS GRADUATION REQUIREMENT

ELECTIVE

**COMPUTER TECHNOLOGY
and NETWORKING II (2539)**

Credits: 2

(Heartland Dual Credit -
Networking 150- 3 credits,
Networking 166- 3 credits,
Networking 167- 3 credits.)

*Prerequisites: Computer
Technology and Networking I*

Weighted Grade: No

NCAA: No

CTE Course: Yes

State Code: 10252A002

This course builds on the skills introduced in Computer Maintenance I. Students learn how to connect and install multiple computers and peripherals together to create a computer network. Students build, configure, and maintain network servers along with installing and configuring various network operating systems and learn to use troubleshooting services, system monitoring utilities, and data backup and recovery systems. Other topics include learning how to connect various network components such as servers, computers, and printers together using data cabling, hubs, and switches. In addition, students learn how to install and upgrade software and share resources across the network. Students learn how to secure and protect network servers and data as well as setting up and configuring a firewall, intrusion detection system, and encryption software for identifying and preventing potential network attacks.

MEETS GRADUATION REQUIREMENT

ELECTIVE

**COMPUTER TECHNOLOGY
and NETWORKING III (2539A)**

Credits: 2

Prerequisites: Computer
Technology and Networking
II

Weighted Grade: No

NCAA: No

CTE Course: Yes

State Code: 10252A002

This course builds on the skills introduced in Computer Technology and Networking I and II. Internships will be a part of this course along with independent study in the students' area of interest. Cybersecurity is currently the main focus of this course through an online lab simulation application.

MEETS GRADUATION REQUIREMENT **ELECTIVE**

CONSTRUCTION I (2541)

Credits: 2

(Heartland Dual Credit -
Construction 101 - 3 credits)

Prerequisites: None

Weighted Grade: No

NCAA: No

CTE Course: Yes

State Code: 17002A001

This course provides an opportunity for students who are planning on entering a post-secondary educational program in construction or entering into the workforce at entry level. The focus of the class is the construction by the students of a residential home, with emphasis on foundations, framing, exterior and interior finish and roofing. Students will develop workplace skills in basic math, hand and power tools, basic blueprint reading, safe work habits, proper job attitudes, technical jargon and learn about the wide variety and opportunities in the field of construction.

*Certification: OSHA 10-hour safety certification and
CertainTeed Master Shingle Applicator Certification*

MEETS GRADUATION REQUIREMENT **ELECTIVE**

CONSTRUCTION II (2542)

Credits: 2

Prerequisites: Construction I

Weighted Grade: No

NCAA: No

CTE Course: Yes

State Code: 17002A002

This course provides an opportunity for students who are planning on entering a postsecondary educational program in construction or enter into the workforce at entry level. Students will enhance workplace skills in blueprint reading, mechanical systems, electrical wiring, and construction estimating and scheduling, while developing leadership roles. *Students have the opportunity to earn additional certification in other career areas through a national database.*

MEETS GRADUATION REQUIREMENT **ELECTIVE**

COSMETOLOGY I (2543)

Credits: 2

Prerequisites: None

Weighted Grade: No

NCAA: No

CTE Course: Yes

State Code: 19101A001

Do you want to learn how to braid, style, and perm long and short hair? Then this is the program for you! Students attend Hairmasters, which is a Pivot Point Member School. While attending, students demonstrate competencies in two of the five classroom modules needed for the required Illinois State Board Exam. All students will focus on one module in the first year and another module in the second year. Classes will also attend the Midwest Beauty Show in Chicago, where they are able to network with over 50,000 hair, skin, and nail professionals. **Module One** will consist of styling hair in the wet and dry state. Training on manikins will develop an understanding of the shape of the head. Observation will be made of different ways of styling long and short hair. These methods may include braiding, curling, straightening, up and down styles, and many more. Students then practice these methods until they have mastered these techniques based upon industry standards.

First and second year students may also attend extra hours on Saturday and attend night school to complete their certification early with the approval of their instructor. The Bloomington Area Career Center will pay for one night school class and may pay for some Saturday hours.

MEETS GRADUATION REQUIREMENT

ELECTIVE

COSMETOLOGY II (2544)

Credits: 2

Prerequisites: Cosmetology I

Weighted Grade: No

NCAA: No

CTE Course: Yes

State Code: 19101A002

Module Two will consist of understanding the texture of the hair. This will include adding and removing texture to hair, as well as multicultural texture reformation. Observation will be made of different ways of perming using different chemicals and rod styles, and relaxing hair using different chemical relaxers. Students then practice these methods until they have mastered these techniques based upon industry standards. All hours accumulated during the student's time at BACC Hairmasters Cosmetology are credited towards the completion of the 1,500 hour course and licensure. First and second year students may also attend extra hours on Saturday and attend night school to complete their certification early with the approval of their instructor. The Bloomington Area Career Center will pay for one night school class and may pay for some Saturday hours.

MEETS GRADUATION REQUIREMENT

ELECTIVE

COSMETOLOGY III (2544A)

Credits: 2

Prerequisites: Cosmetology II

Weighted Grade: No

NCAA: No

CTE Course: Yes

State Code: 19101A002

All hours accumulated during the student's time at BACC Hairmasters Cosmetology are credited towards the completion of the 1,500 hour course and licensure. *This program pathway can be completed at Hairmasters where they will prepare you to take the Illinois State mandated exam.*

MEETS GRADUATION REQUIREMENT

ELECTIVE

CRIMINAL JUSTICE & LAW ENFORCEMENT I (2547)

Credits: 2

Prerequisites: None

Weighted Grade: No

NCAA: No

CTE Course: Yes

State Code: 15051A003

This program is designed to acquaint students with the various aspects of the criminal justice system, including the structure of law enforcement; procedures of criminal law; the court system; corrections; and juvenile justice. Students will first learn the basics of the criminal justice system and become familiar with criminal law and how it applies to individual rights. United States Supreme Court landmark cases will be examined to have a better understanding of their importance in today's role in our criminal justice system. Students will also hear from experts who will expand their knowledge about the multitude of career opportunities within the criminal justice field. Students will take part in field trips to various locations within the criminal justice specialty areas to see and learn about their daily operations. Students will also take part in various hands-on activities similar to the duties of a police officer, as well as explore aspects of various roles within the police departments, including exploration in forensic science, evidence processing, and steps to properly process a crime scene.

MEETS GRADUATION REQUIREMENT

ELECTIVE

CRIMINAL JUSTICE & LAW ENFORCEMENT II (2548)

Credits: 2

Prerequisites: Criminal Justice and Law Enforcement I

Weighted Grade: No

NCAA: No

CTE Course: Yes

State Code: 15051A003

During this phase of the program, students will have the opportunity to explore more concise and detailed operations of the criminal justice field. Students will participate in various job-shadowing opportunities and off-site visits to select venues to gain a better understanding of specialties and characteristics within the criminal justice field. Independent study units will be used to allow a more advanced insight, as students will research and analyze actual police cases to examine findings and submit recommendations. Students will also have the opportunity to take on leadership and mentoring roles to first-year students and utilize their first-year experiences to assist in guiding students toward a successful year.

MEETS GRADUATION REQUIREMENT

ELECTIVE

CULINARY ARTS I (2545)

Credits: 2

(Joliet Junior College Dual Credit - Culinary 106, 2 credits)

Prerequisites: None

Weighted Grade: No

NCAA: No

CTE Course: Yes

State Code: 16052A001

This course provides students considering a career in culinary arts and the food service industry with classroom instruction and lab experiences to develop job-related competencies. Students start with basic sanitation and workplace safety, and then continue with instruction on food handling, preparation, quantity production, quality control, planning, operation, and presentation. Commercial quality food service equipment will be used to prepare food and provide hands-on instruction for each area of food study. Students will have the opportunity to earn the Food Service Food Handler Certification.

Certifications: ServSafe Food Handler and ServSafe Food Production Manager Certification through ServSafe, which is endorsed by the National Restaurant Association.

MEETS GRADUATION REQUIREMENT

ELECTIVE

CULINARY ARTS II (2546)

Credits: 2

Prerequisites: Culinary Arts I

Weighted Grade: No

NCAA: No

CTE Course: Yes

State Code: 16055A001

This course provides students with leadership opportunities and responsibility for food service management. Students in this class have the opportunity to cater many different events. Students have the opportunity to plan menus, select food, supervise food preparation, develop pricing strategies, order food, and maintain safety and sanitation, while mastering operation of all food preparation equipment. Students develop skills which will prepare them for post-secondary education and employment opportunities.

MEETS GRADUATION REQUIREMENT

ELECTIVE

EMT (Emergency Medical Technician) BASIC(2608)

Credits: 2

(Heartland Dual Credit -EMT 101, 8 credits)

Prerequisites: Senior Standing

Weighted Grade: No

NCAA: No

CTE Course: Yes

State Code: 14055A001

This course will introduce the care and handling of the critically ill and injured. Emphasis is on the development of skills in assessment of illnesses and the application of proper emergency care procedures. This course will meet federal and state guidelines for basic EMT training. Students who successfully complete this course will be able to sit for the Illinois State or National Registry EMT-Basic licensure exam after turning 18 years of age and graduating from high school.

Students should be prepared to provide their own transportation.

MEETS GRADUATION REQUIREMENT

ELECTIVE

FIRE SCIENCE I (2570)

Credits: 2

(ICC Dual Credit -
Fire Science 110, 3 credits
Fire Science 201, 3 credits)

Prerequisites: None

Weighted Grade: No

NCAA: No

CTE Course: Yes

State Code: 15152A001

This program allows students to explore and prepare for a possible career in Fire Service and as an Emergency Medical Responder (EMR). The course is taught by Professional Firefighters. Students will gain lab experience on-site at Bloomington and Normal Fire Stations. Students will learn technical and manipulative skills. Those skills include, but are not limited to the following areas of study: fire behavior, safety, self-contained breathing apparatus, turnout gear use, portable fire extinguishers, ladders and ladder use, fire hose and appliances, building construction, forcible entry, ventilation, water supply, nozzles and fire streams, rescue, fire control, and ropes and knots. The students will be offered the opportunity to participate in Skills USA, a competition of other fire science students in Illinois. Students must be in good physical condition to enroll in the course, as training will include climbing stairs and crawling with additional equipment and supplies.

MEETS GRADUATION REQUIREMENT

ELECTIVE

**GRAPHIC DESIGN AND VIDEO
PRODUCTION I (2551)**

Credits: 2

(Heartland Dual Credit -
Digital Media 101, 3 credits)

Prerequisites: None

Weighted Grade: No

NCAA: No

CTE Course: Yes

State Code: 11154A001

Do you want to know how to turn your ideas into digital graphics? Have a skill at conceptualizing advertising graphics and want to turn them into usable pieces? Well here is a class for you. Students in this course will develop skills used by digital media graphic designers, desktop publishers, and other members of the multimedia/communications industry. Students will be using industry standard software packages, such as: Photoshop, Illustrator, Final Cut Pro X, and more. Students will also be eligible to test for their Adobe Certified Associate credentials in Photoshop and Illustrator CC. Students will be introduced to drawing techniques, digital photography, page assembly, computer animation, multimedia, production and print technologies, as well as vinyl printing. Students will utilize the steps necessary to mass produce digital media designs. If you are considering a career in graphic arts, this is the class for you! *Certification: Adobe Illustrator CC and Photoshop CC.*

MEETS GRADUATION REQUIREMENT

ELECTIVE

GRAPHIC DESIGN AND VIDEO PRODUCTION II (2552)

Credits: 2
(Heartland Dual Credit - Digital Media 120, 3 credits)
Prerequisites: Graphic Design and Video Production I
Weighted Grade: No
NCAA: No
CTE Course: Yes
State Code: 11154A002

Students in this class will receive intensive study in advanced digital media design, computer animation, and multimedia. Students will have the opportunity to establish a leadership role within the print shop, and partner with outside resources to create projects for distribution. This class is recommended for students who are considering a career in the Creative Services Industry as well as preparing for post-secondary education.

MEETS GRADUATION REQUIREMENT **ELECTIVE**

GRAPHIC DESIGN AND VIDEO PRODUCTION III (2552A)

Credits: 2
Prerequisites: Graphic Design And Video Production II
Weighted Grade: No
NCAA: No
CTE Course: Yes
State Code: 11154A002

Curriculum will be based on student interest, market trends and business demands. Internships will also be a part of the coursework.

MEETS GRADUATION REQUIREMENT **ELECTIVE**

HEALTH CAREERS AND MEDICAL TERMINOLOGY (2561)

Credits: 2
(Heartland Dual Credit - Health 110, 3 credits)
Prerequisites: None
Weighted Grade: No
NCAA: No
CTE Course: Yes
State Code: 14154A001

Health Careers and Medical Terminology is a one-year program offered to sophomore, junior and senior students interested in pursuing a career in the medical field or in public safety. Students will learn basic human anatomy and physiology, a solid foundation in medical terminology, and injury/disease processes. Students will have many opportunities for hands-on training and skills development. It will provide a clear understanding of the necessary first-aid process in an emergency situation. The course will include field trips to local hospitals to see the skills firsthand with the potential for job shadowing. The course will explore many medical career options such as Physical and Occupational Therapy, Radiology, Dental Assistant, Nursing, Sports Medicine, X-Ray Technician, as well as Physician specialties. It will give students an up close look at employment opportunities and educational pathways.

MEETS GRADUATION REQUIREMENT **ELECTIVE**

NURSE ASSISTANT (2553)

(Heartland Dual Credit -
Health 110, 8 credits)

Credits: 2

Prerequisites: None

Weighted Grade: No

NCAA: No

CTE Course: Yes

State Code: 14051A001

Are you contemplating a career in health care? Well, this is the class for you! The opportunities are unlimited for trained professionals in the healthcare field. Upon successful completion of this course, students are eligible to take the state competency exam to become certified nursing assistants (CNAs). Classroom instruction includes certification in Basic Life Support/CPR and fundamental healthcare principles. Some of these healthcare principles include infection control, safety, patient confidentiality, measuring vital signs, bathing and grooming techniques, nutrition, and transferring residents. Students will participate in hands-on care of residents in long-term care facilities as part of the clinical requirements. Attendance is essential due to the number of state-mandated hours that are required. This class is recommended for students planning for post-secondary education or career attainment. Excellent attendance and communication skills are necessary.

MEETS GRADUATION REQUIREMENT

ELECTIVE

ADVANCED CNA (2554)

Credits: 2

Prerequisites: Completion of
Nurse Assistant program,
CNA certification, and
approval from Nurse
Assisting instructors

Weighted Grade: No

NCAA: No

CTE Course: Yes

State Code: 14002A002

Are you interested in getting hands-on experience in local hospitals, clinics, and medical offices? The Advanced CNA program is an internship program in which students gain learning experiences in local health care facilities. Students will benefit from speakers within the industry, enhance their technical skills, and develop workplace readiness. Students who have completed the BACC Nurse Assistant program have an opportunity to apply for the Advanced CNA program. The top 15 students are chosen based on their clinical skills, grades, attendance, professionalism, communication skills, and leadership qualities. Participating internship sites include, but are not limited to: Carle Bromenn Medical Center, OSF St. Joseph Medical Center, Center for Wound Healing and Hyperbaric Medicine, and Illinois Cancer Care. This class is recommended for students planning for post-secondary education or career attainment.

MEETS GRADUATION REQUIREMENT

ELECTIVE

**ROBOTICS & ENGINEERING
(2563)**

Credits: 2
Prerequisites: None
Weighted Grade: No
NCAA: No
CTE Course: Yes
State Code: TBD

Students enrolled in this course will demonstrate knowledge and skills necessary for robotic and engineering industries. Through implementation of the design process, students will apply concepts learned in physical science and physics classes to mechanical devices. Students will develop skills in mechanical design (CAD), and construction as they work in teams to build simple and complex robotic devices. They will build prototypes or use simulation software to test their designs. Additionally, students will explore career opportunities, employer expectations, and educational needs in the engineering fields.

MEETS GRADUATION REQUIREMENT **ELECTIVE**

**GEOMETRY IN
CONSTRUCTION (2585)**

Credits: 2
Prerequisites: Algebra I
Weighted Grade: No
NCAA: No
CTE Course: Yes
State Code: 17002A001

Geometry in Construction is an integrated geometry in construction course. The common core aligned geometry curriculum is taught in the context of construction. The course is team- taught by a math teacher and a technology teacher. The concepts within the course are organized to complement the skills and the knowledge needed in the building process starting with foundational concepts. The students in this course will have math days as well as build days. On the build days, the students will be working together to build a tiny house, shed, or assist with a Habitat for Humanity house. Students will receive two credits for this year-long, blocked course; one elective credit, one math credit.

MEETS GRADUATION REQUIREMENT **ELECTIVE**

**LABORERS' TRAINING
(2600)**

Credits: 2
Prerequisites: None
Weighted Grade: No
NCAA: No
CTE Course: Yes
State Code: TBD

Are you interested in concrete finishing, bridging, mason tending, landscaping, GPS, blueprint reading, and pipe laying? The options and specializations available to Union Laborers are incredible! Upon successful completion of this program, students are eligible to apply for the Laborer's Union apprenticeship program with thirteen of the fifteen required classes for the Laborer's Union Apprenticeship Program. This course is a combination of both classroom instruction and hands-on experiences. Attendance is important for this course. This class is recommended for students who are highly interested in joining the Laborer's Union upon graduation. An interest in hands-on work and a willingness to try new things are essential for this course.

**TRADES &
MANUFACTURING
(2605)**

Credits: 2

Prerequisites: None

Weighted Grade: No

NCAA: No

CTE Course: Yes

State Code: TBD

This program will introduce students to trade and manufacturing opportunities in the BACC Region. Students will receive an overview of key employer and trade union career opportunities to better understand the needed skills and expectations of local employers and industries. Students will meet at a variety of locations, using local employer/union facilities while meeting experts to share knowledge and skill training and development. Students will also earn OSHA 10 Certification. In addition, students will learn about various employment opportunities and how to access those opportunities after high school. Students will be involved in a "rotation" that will include cooperative instruction through local business partners. Additional opportunities may include an internship with a business/trade partner, opportunities to earn a CDL permit, drone license, and/or other OSHA certificates.

WELDING I (2559)

Credits: 2

(Heartland- Dual Credit
WELDING 110 - 3 cr)

Prerequisites: None

Weighted Grade: No

NCAA: No

CTE Course: Yes

State Code: 13203A005

This course is designed for students with an interest in the field of manufacturing, which includes machining, sheet metal, computerized machines, and welding. Classroom instruction will include workplace safety, blueprint reading, applied math, training of hand and power tools, and instruction on proper procedures of laboratory equipment. Specialized laboratory learning experiences include planning, manufacturing, assembling, and metal fabricating process. Students may work towards the American Welding Society (AWS) certification in Shielded Metal Arc Welding (SMAW). Students will develop skills necessary to continue with post-secondary education, or obtain an entry level position in the manufacturing occupations. Students will also benefit from the business partnership with Caterpillar.

WELDING II (2560)

Credits: 2

Prerequisites: Welding I

Weighted Grade: No

NCAA: No

CTE Course: Yes

State Code: 13203A006

Students enrolled in this course will enhance their opportunities for obtaining employment in manufacturing. Students will specialize in an area of interest while mastering blueprint reading, applied math, training of hand and power tools, and instruction on proper procedures of laboratory equipment. Students will also increase the amount of lab experience in the area of Computer Numerical Control (CNC) by using a lathe and vertical mill. Students experience 95% hands-on activities during the second year and may work towards the American Welding Society (AWS) certification in the Shielded Metal Arc Welding (SMAW). Students will also benefit from the business partnership with Caterpillar.

This class is Dual Credit with Heartland Community College, Manufacturing 115 and Welding 116, 3 Credits each.

MEETS GRADUATION REQUIREMENT

ELECTIVE
